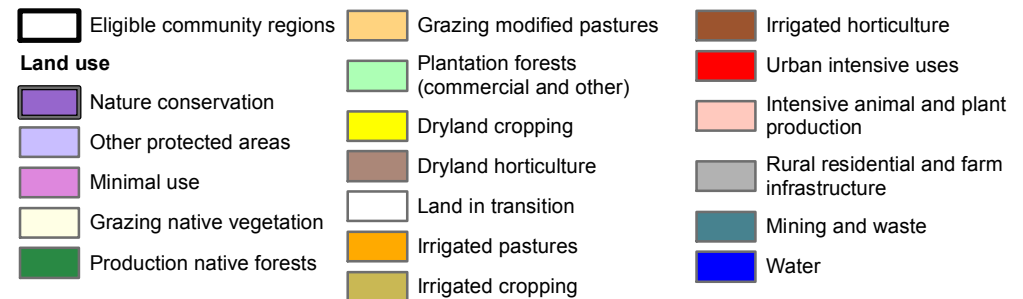
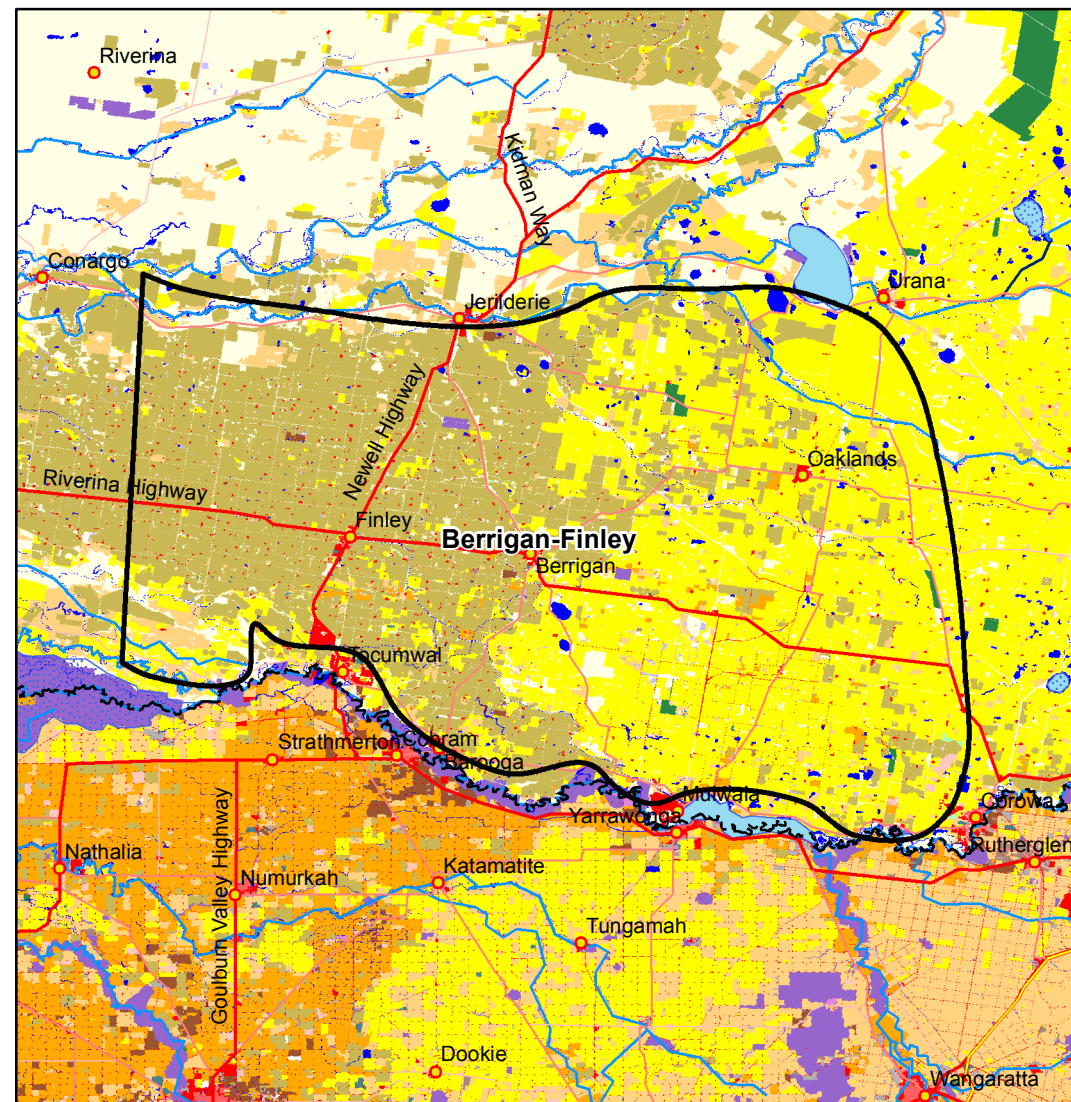


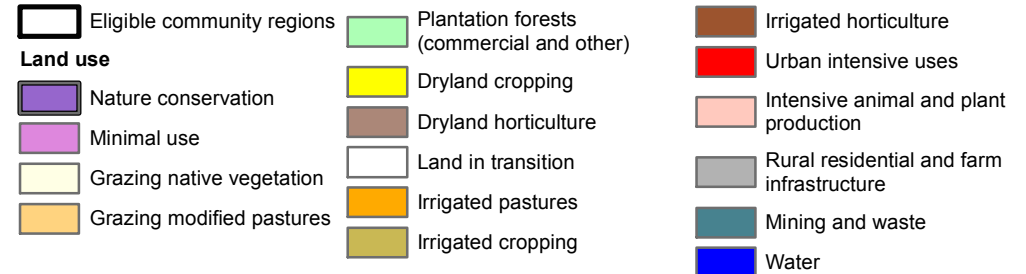
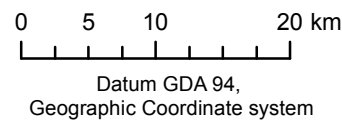
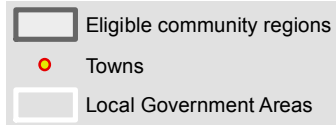
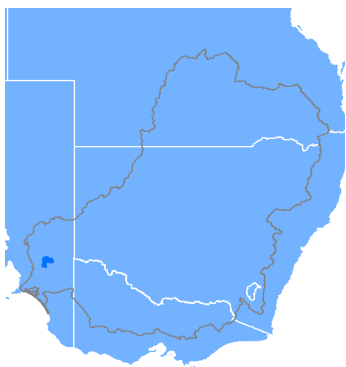
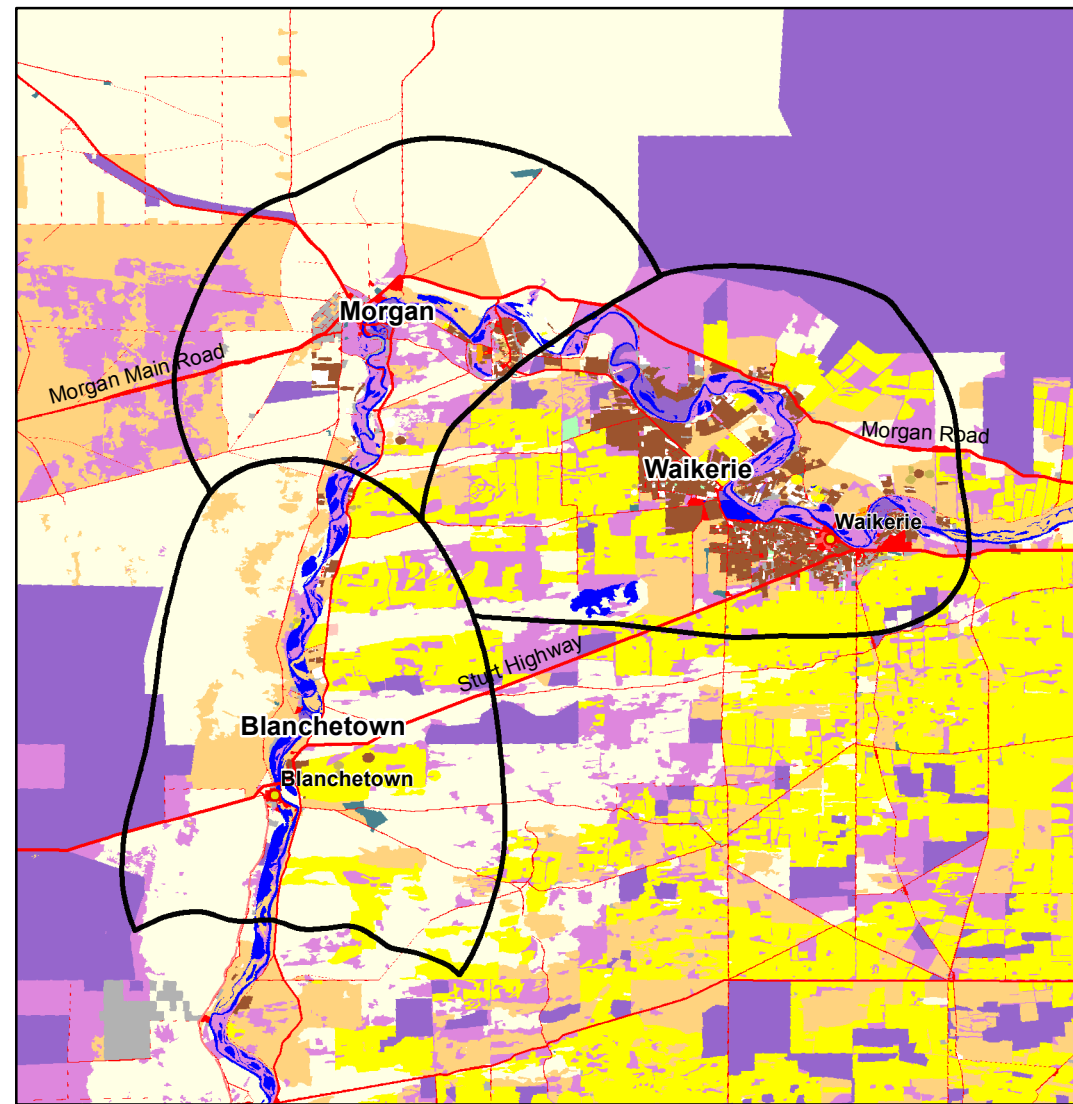
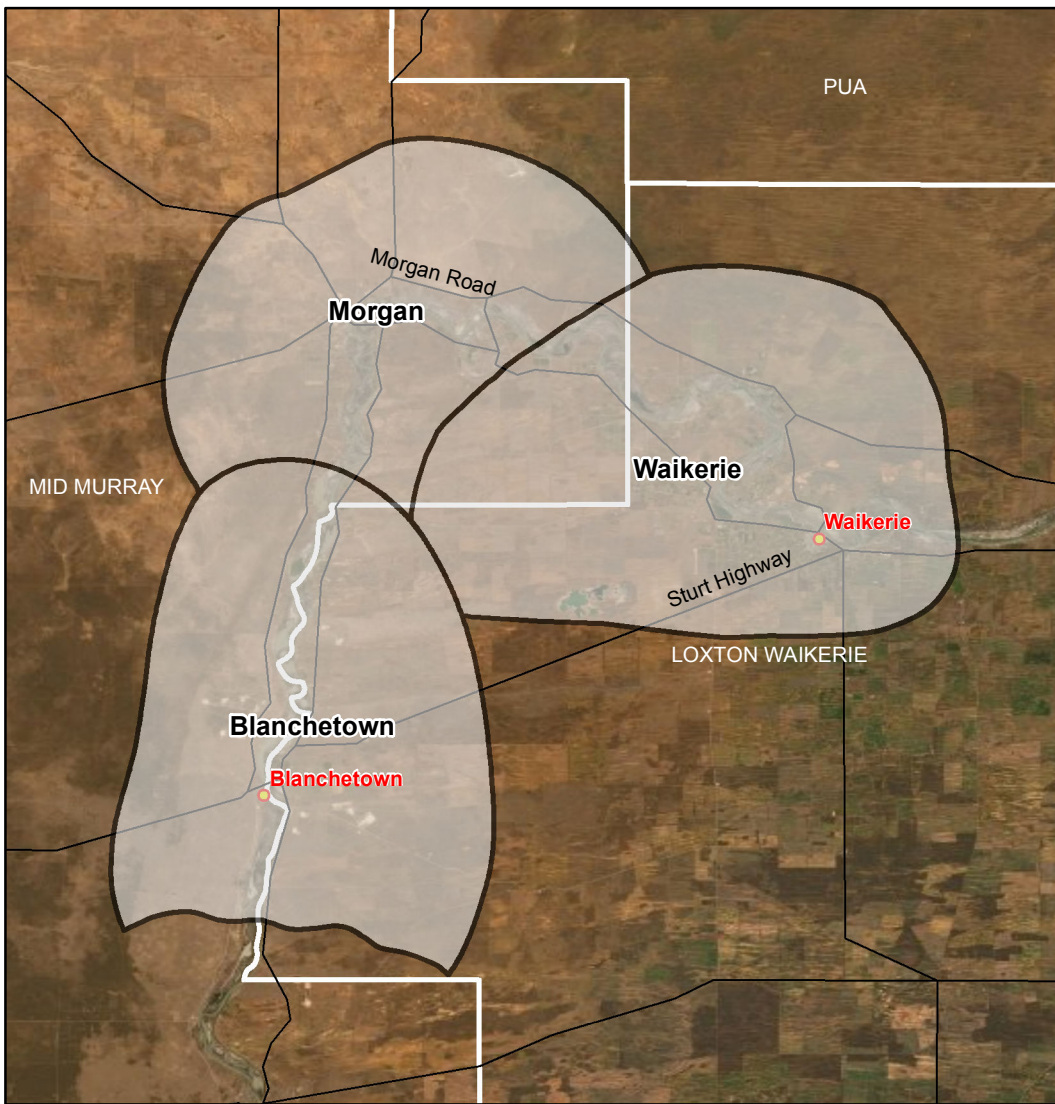
Data sources
 ABARES 2019, Catchment Scale Land Use of Australia - Update December 2018,
 PSMA 2018, Local Government Areas
 MDBA 2019, Community regions,

Map produced by ABARES, Department of Agriculture, November 2019.



Berrigan-Finley Map

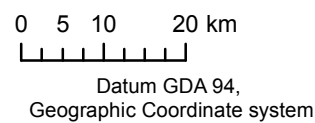
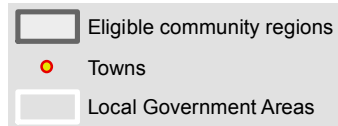
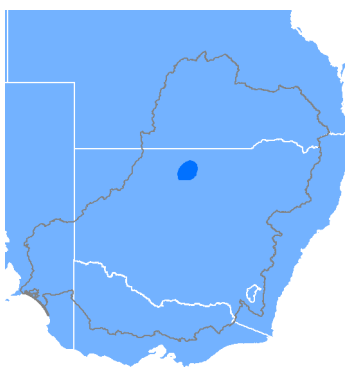
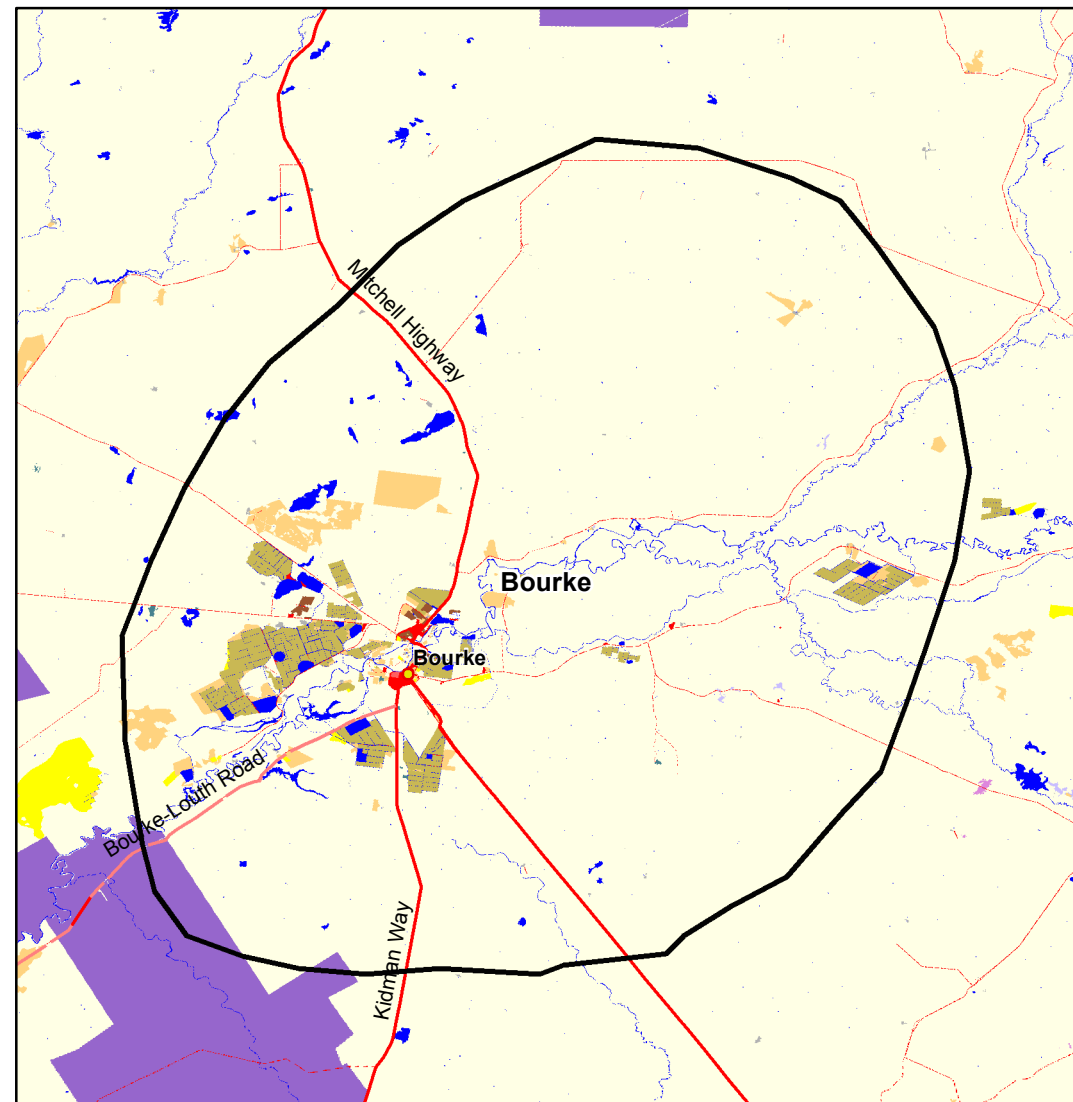
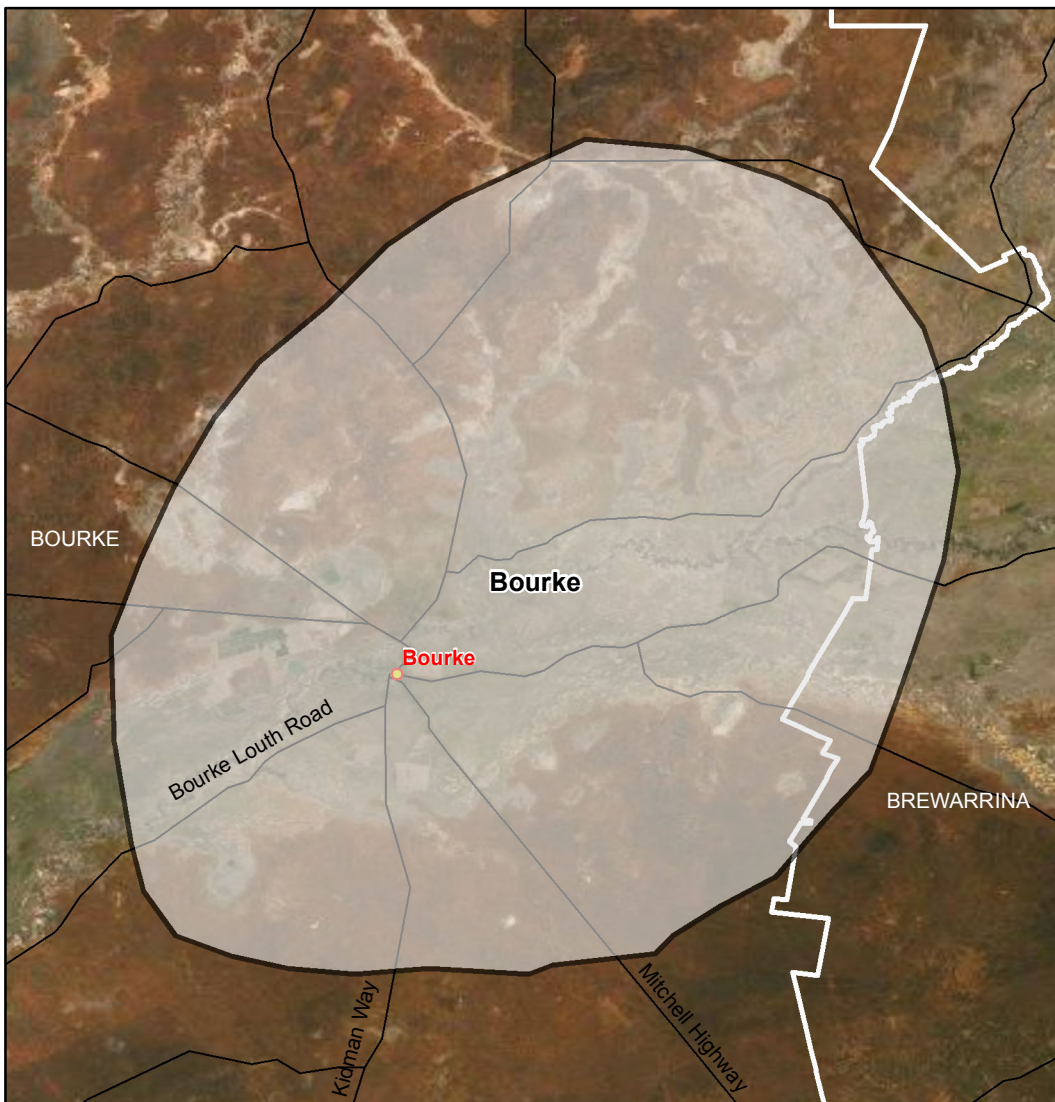
Communities eligible for funding under the MDB Economic Development Program (Round 2)



Data sources
 ABARES 2019, Catchment Scale Land Use of Australia - Update December 2018,
 PSMA 2018, Local Government Areas
 MDBA 2019, Community regions,

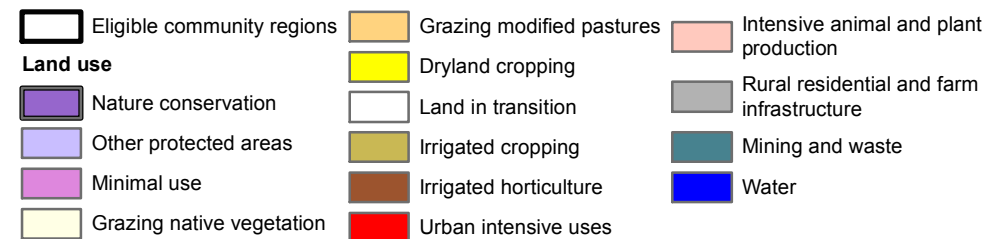
Map produced by ABARES, Department of Agriculture, November 2019.

Blanchetown, Morgan, Waikerie Map Communities eligible for funding under the MDB Economic Development Program (Round 2)



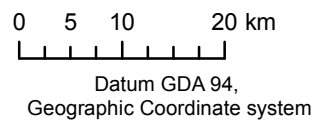
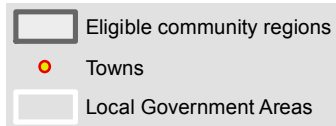
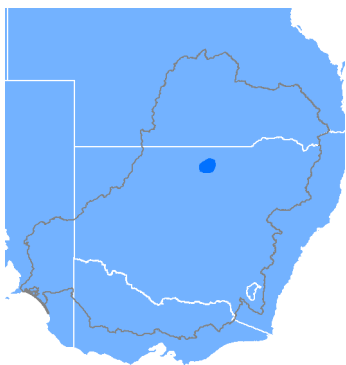
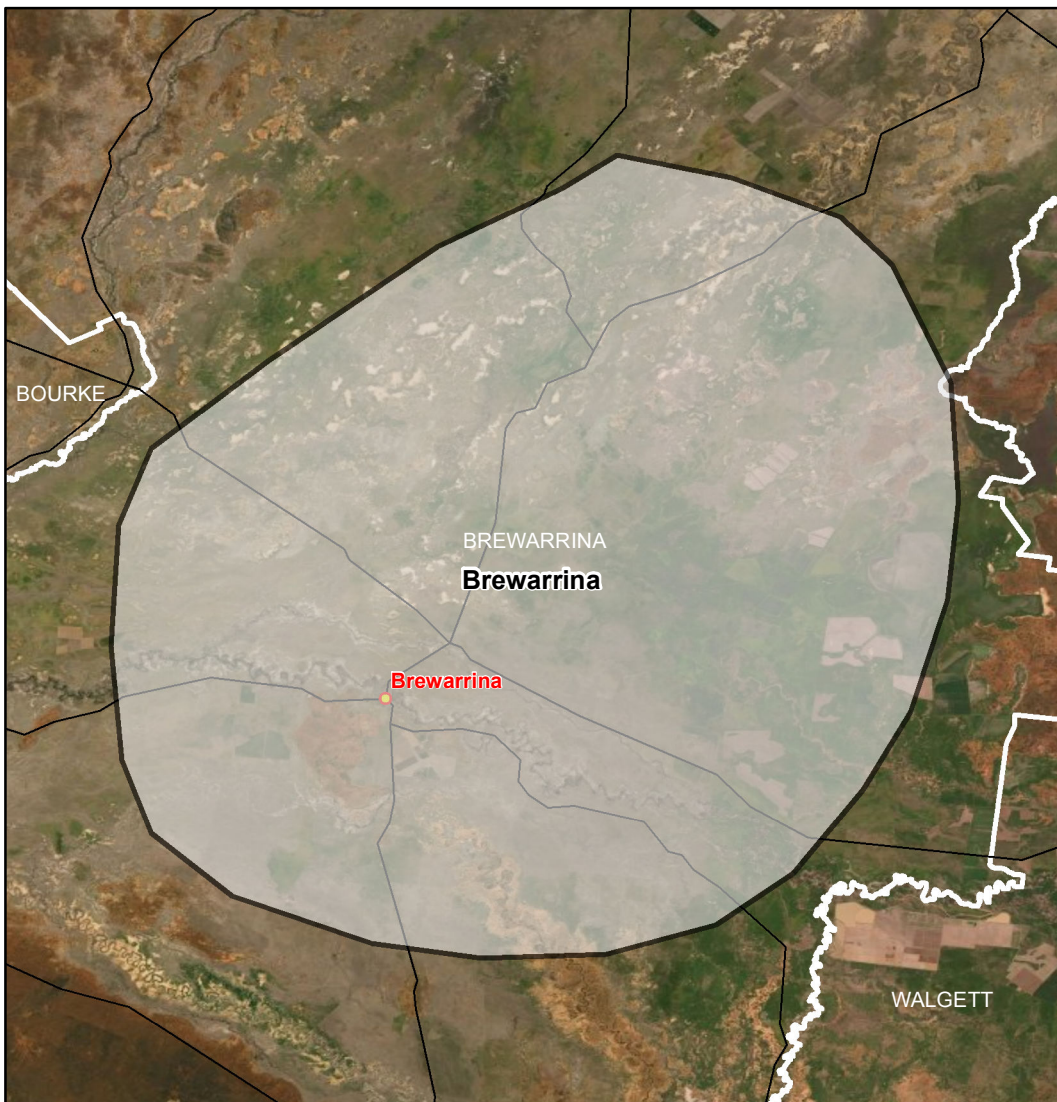
Data sources
ABARES 2019, Catchment Scale Land Use of Australia - Update December 2018,
PSMA 2018, Local Government Areas
MDBA 2019, Community regions,

Map produced by ABARES, Department of Agriculture, November 2019.



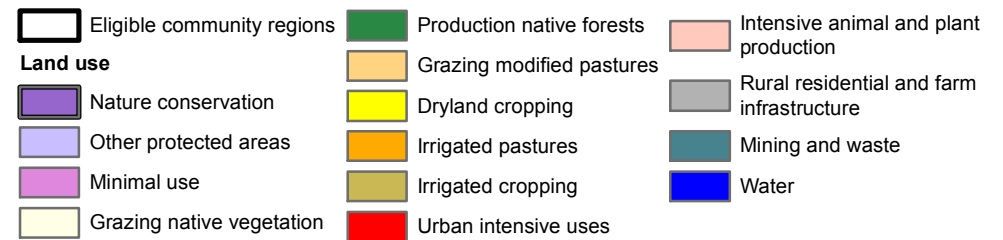
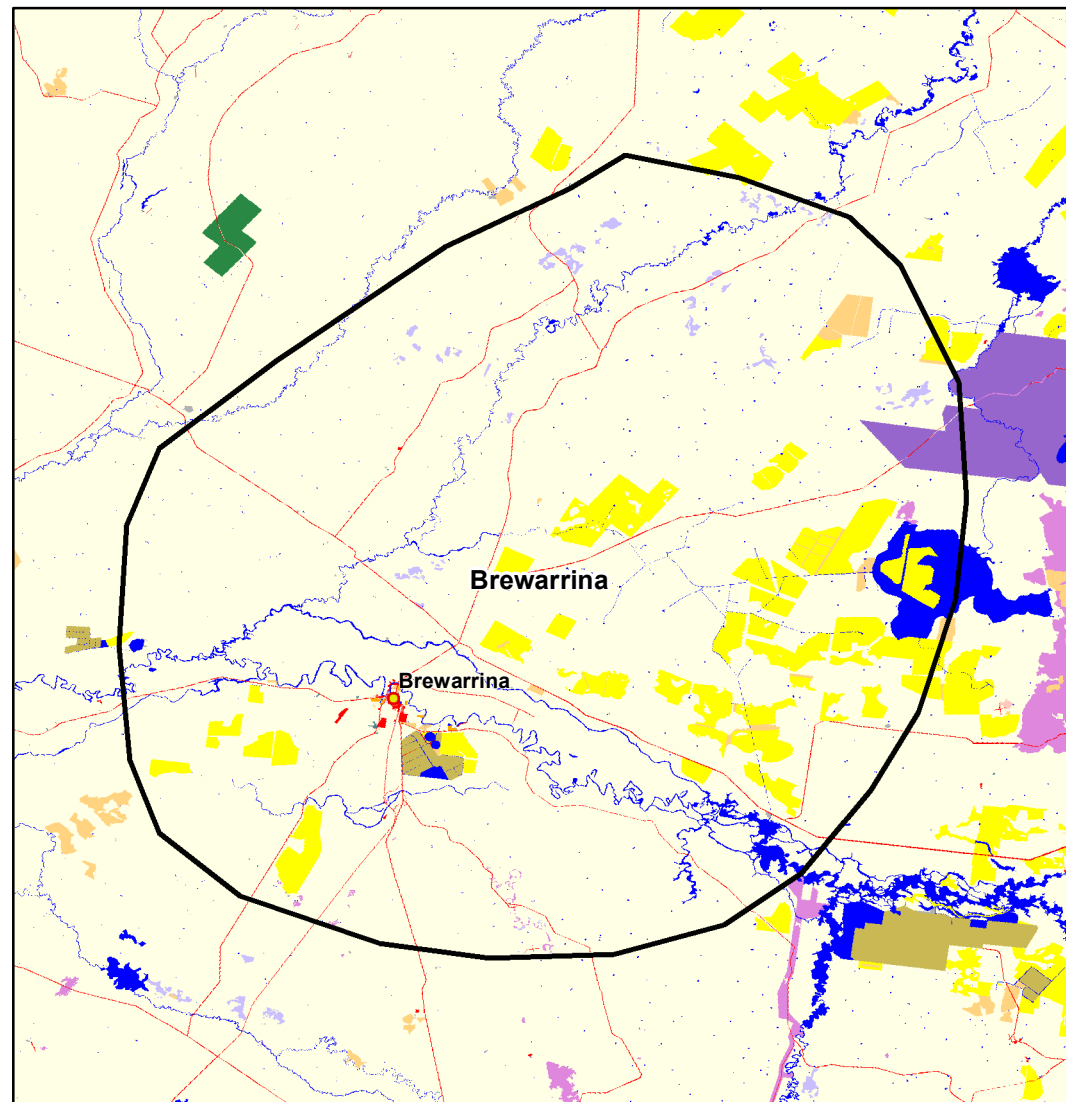
Bourke Map

Communities eligible for funding under the MDB Economic Development Program (Round 2)



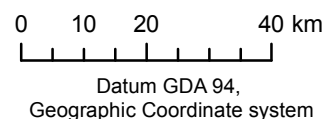
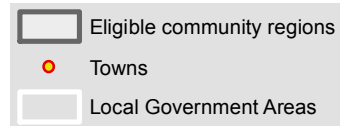
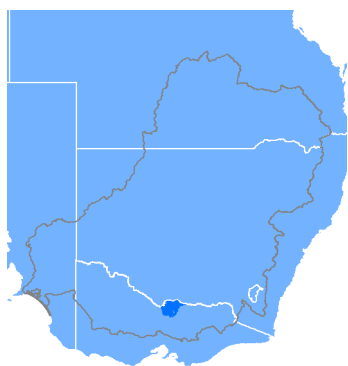
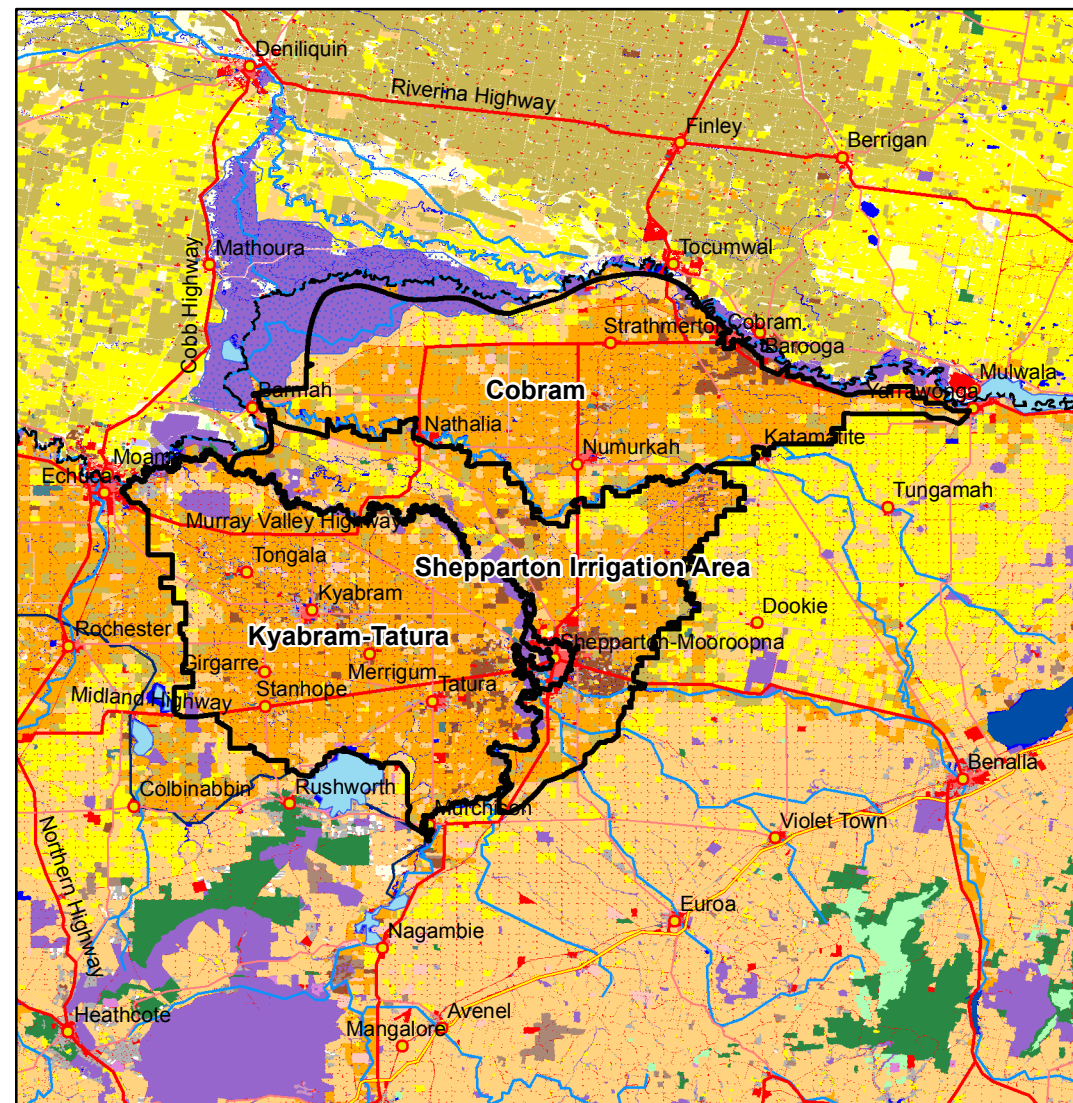
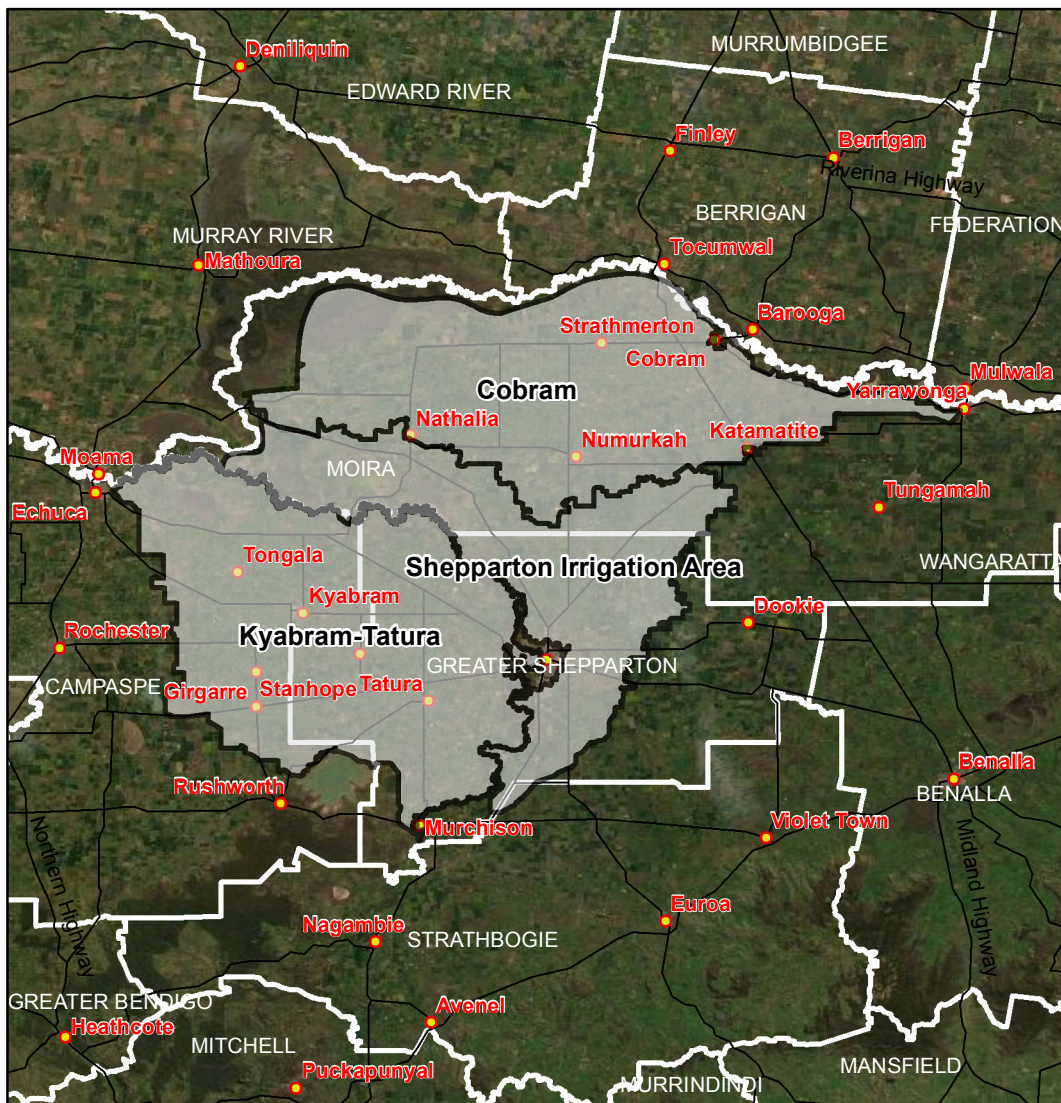
Data sources
 ABARES 2019, Catchment Scale Land Use of Australia - Update December 2018,
 PSMA 2018, Local Government Areas
 MDBA 2019, Community regions,

Map produced by ABARES, Department of Agriculture, November 2019.



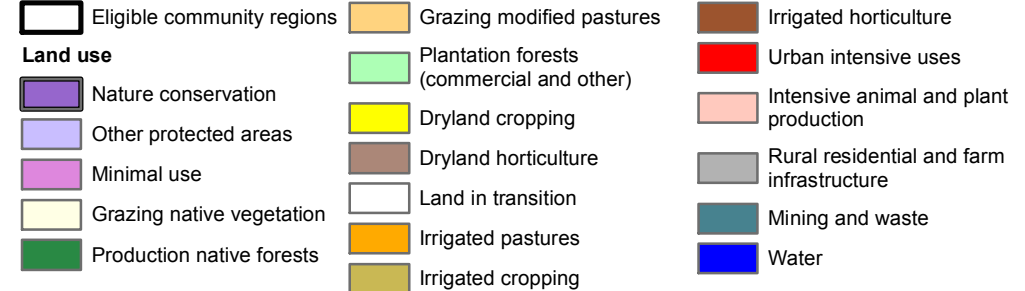
Brewarrina Map

Communities eligible for funding under the MDB Economic Development Program (Round 2)

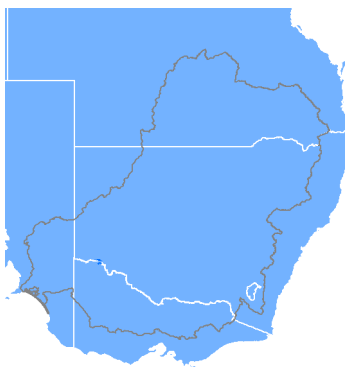
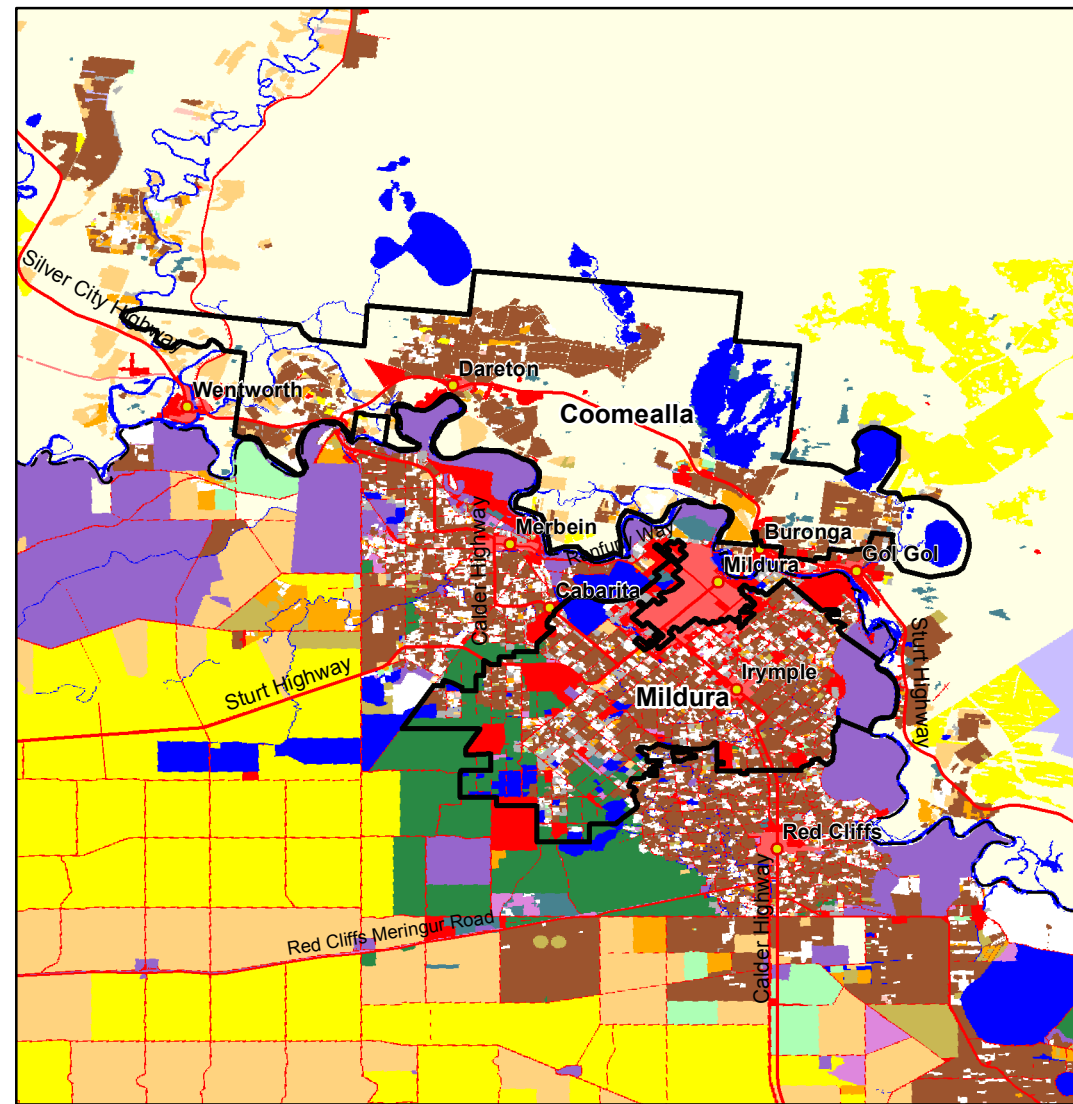
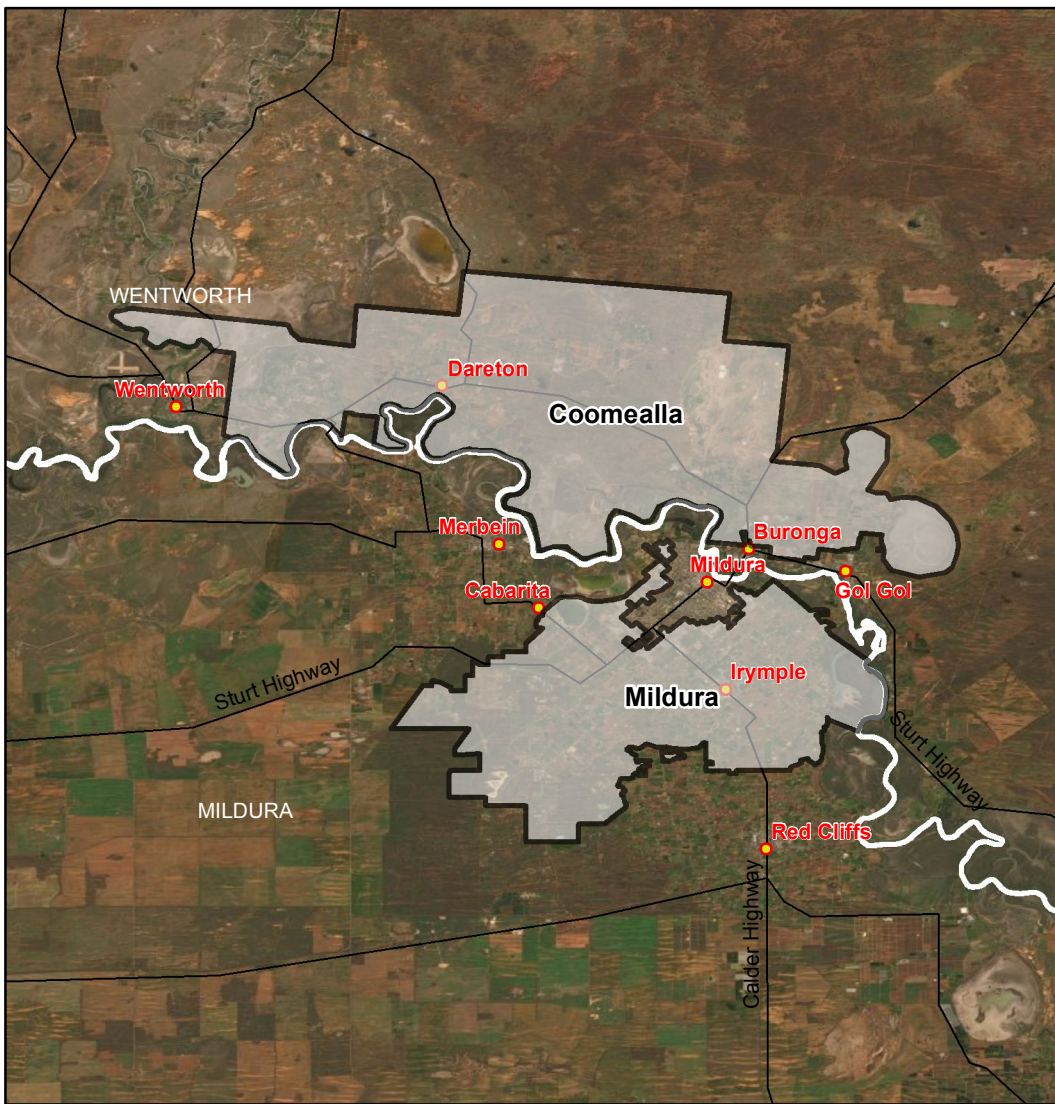


Data sources
 ABARES 2019, Catchment Scale Land Use of Australia - Update December 2018,
 PSMA 2018, Local Government Areas
 MDBA 2019, Community regions,

Map produced by ABARES, Department of Agriculture, November 2019.



Cobram, Kyabram-Tatura, Shepparton Irrigation Area Map
 Communities eligible for funding under the MDB Economic Development Program (Round 2)



- Eligible community regions
- Towns
- Local Government Areas

0 3.5 7 14 km
Datum GDA 94,
Geographic Coordinate system

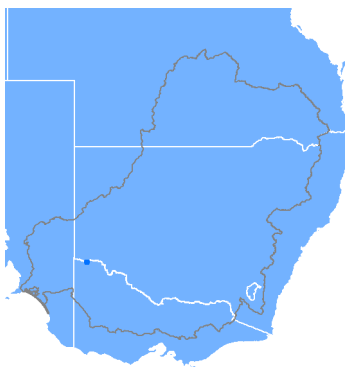
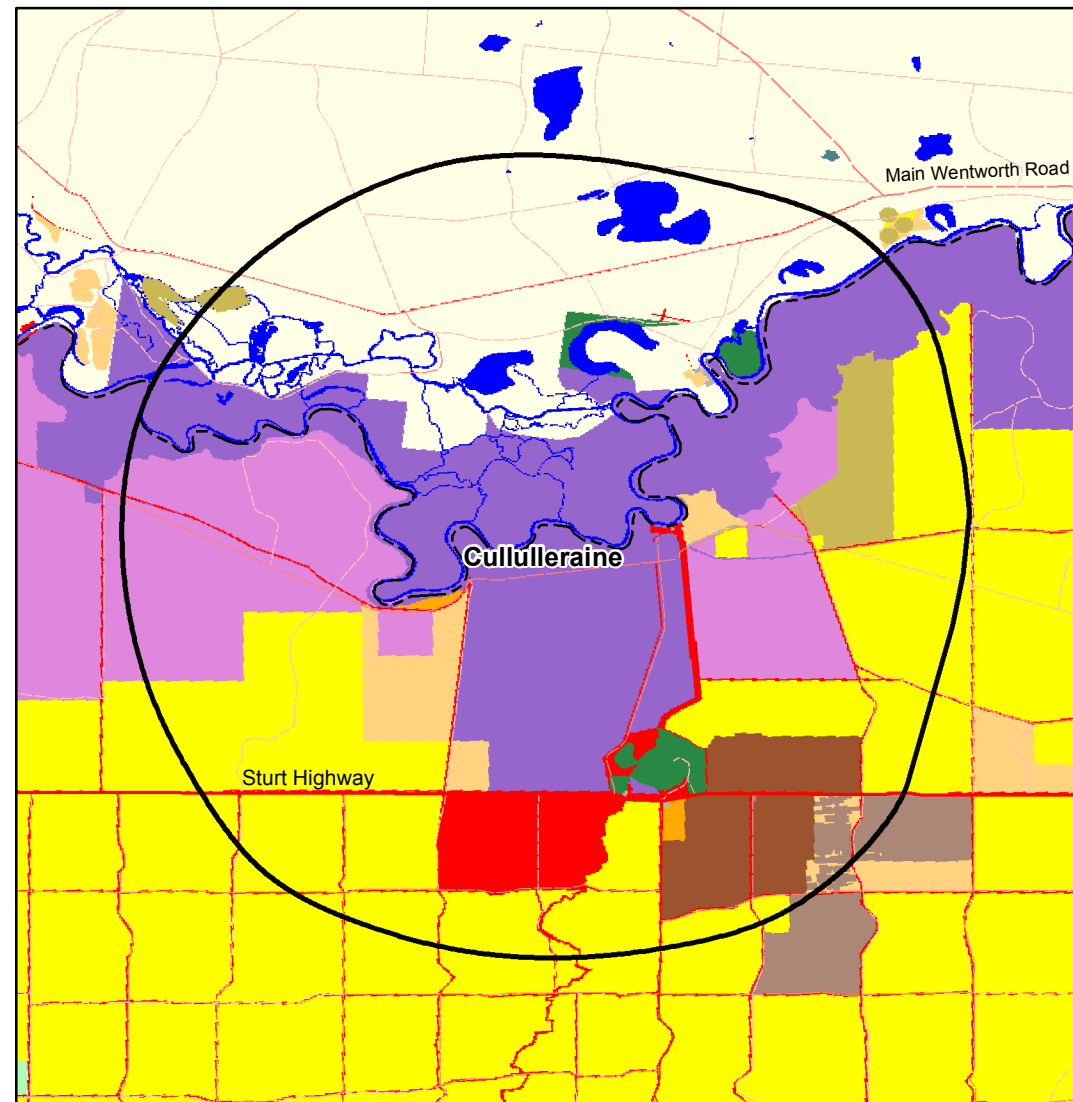
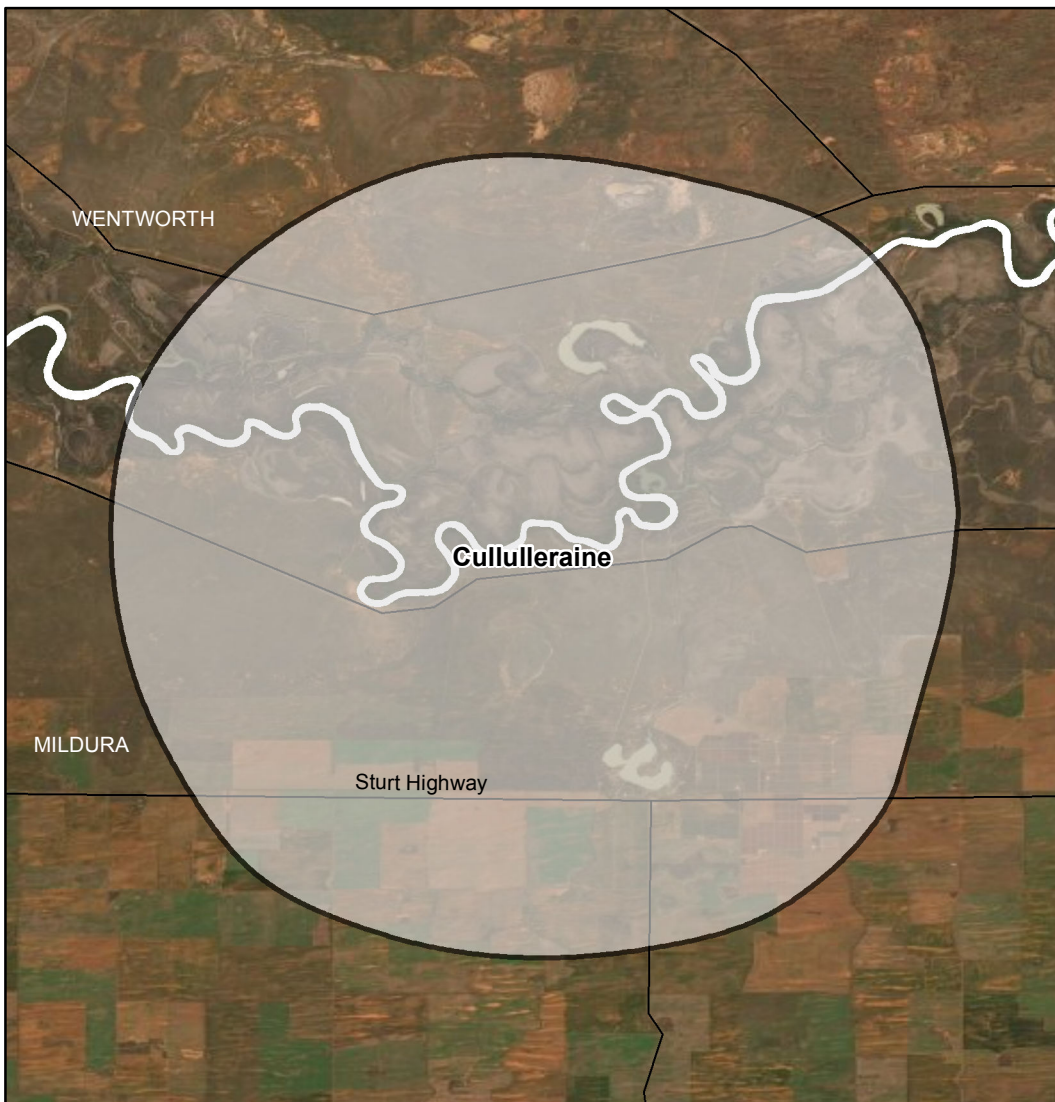
Data sources
ABARES 2019, Catchment Scale Land Use of Australia - Update December 2018,
PSMA 2018, Local Government Areas
MDBA 2019, Community regions,

Map produced by ABARES, Department of Agriculture, November 2019.

- | | | |
|---|---|---|
| <ul style="list-style-type: none"> Eligible community regions Land use Nature conservation Other protected areas Minimal use Grazing native vegetation Production native forests | <ul style="list-style-type: none"> Grazing modified pastures Plantation forests (commercial and other) Dryland cropping Dryland horticulture Land in transition Irrigated pastures Irrigated cropping | <ul style="list-style-type: none"> Irrigated horticulture Urban intensive uses Intensive animal and plant production Rural residential and farm infrastructure Mining and waste Water |
|---|---|---|

Coomealla, Mildura Map

Communities eligible for funding under the MDB Economic Development Program (Round 2)



- Eligible community regions
- Local Government Areas

0 2.25 4.5 9 km

Datum GDA 94,
Geographic Coordinate system

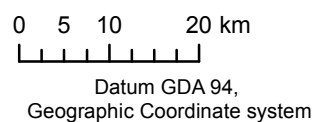
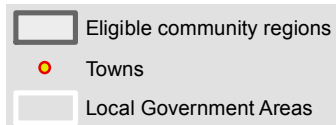
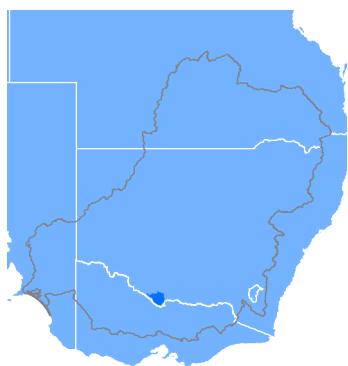
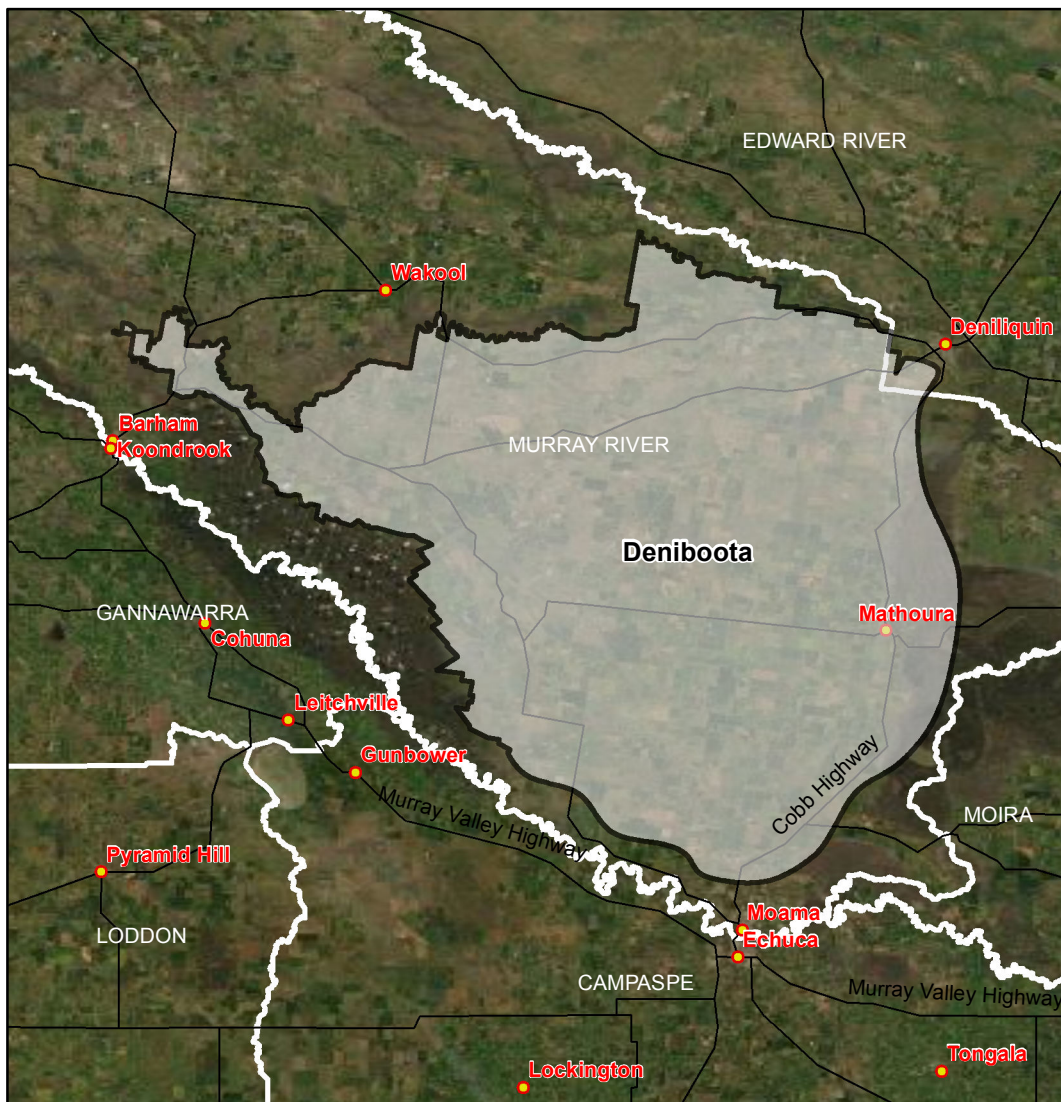
Data sources
ABARES 2019, Catchment Scale Land Use of Australia - Update December 2018,
PSMA 2018, Local Government Areas
MDBA 2019, Community regions,

Map produced by ABARES, Department of Agriculture, November 2019.

- | | | |
|----------------------------|---|---|
| Eligible community regions | Grazing modified pastures | Irrigated horticulture |
| Land use | Plantation forests (commercial and other) | Urban intensive uses |
| Nature conservation | Dryland cropping | Rural residential and farm infrastructure |
| Minimal use | Dryland horticulture | Mining and waste |
| Grazing native vegetation | Irrigated pastures | Water |
| Production native forests | Irrigated cropping | |

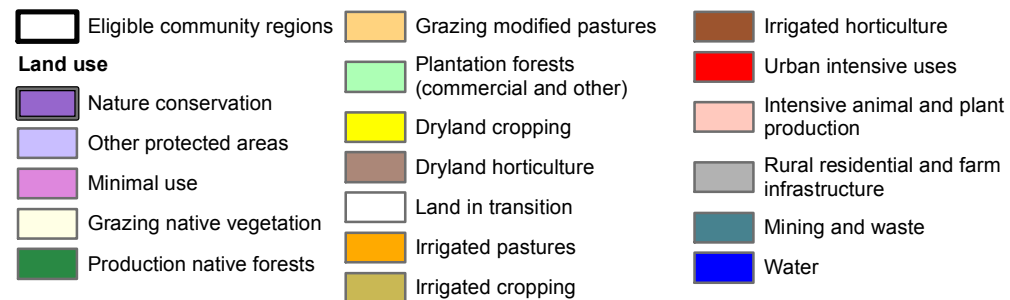
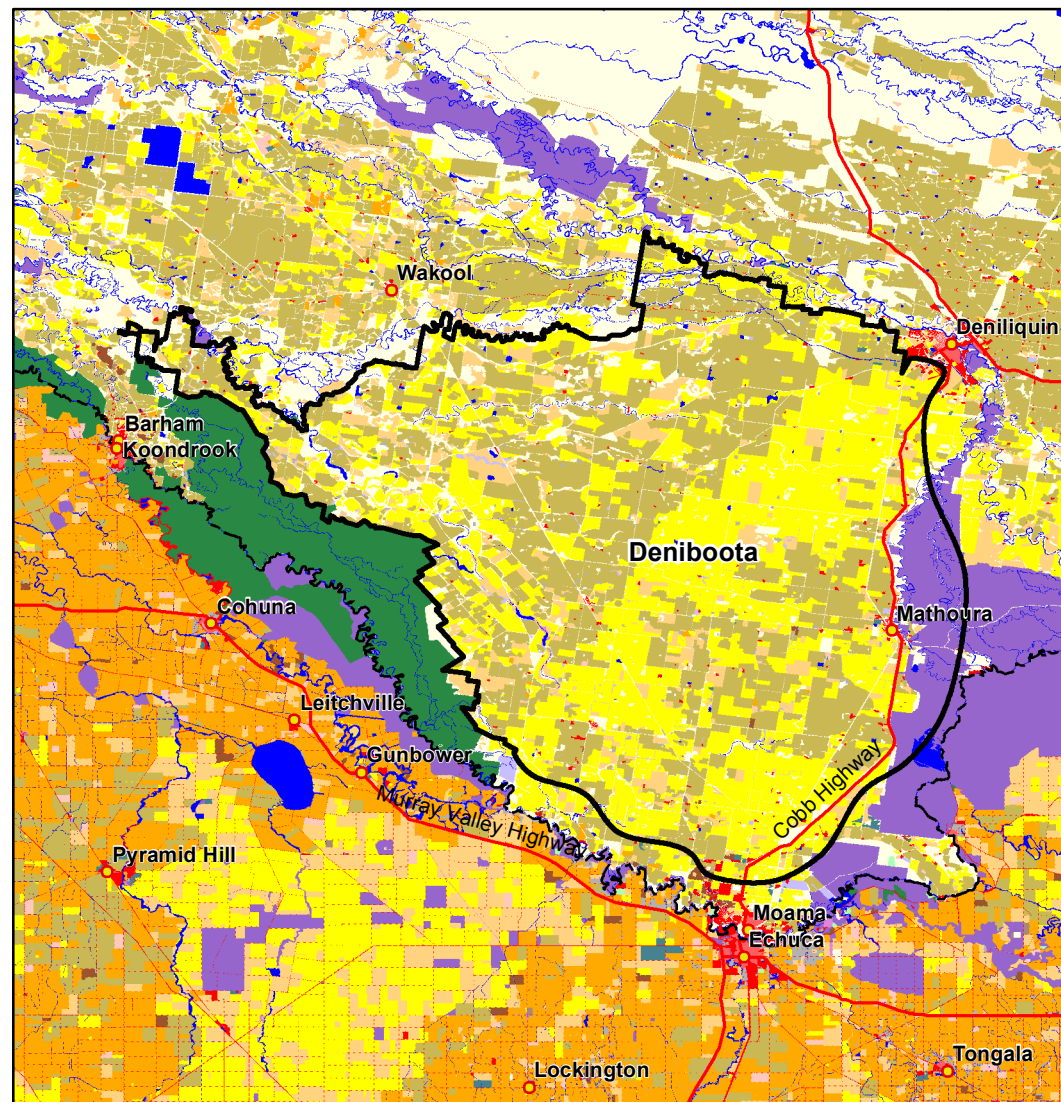
Cullulleraine Map

Communities eligible for funding under the MDB Economic Development Program (Round 2)



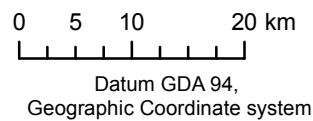
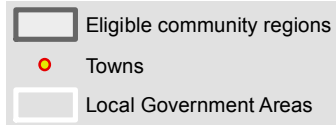
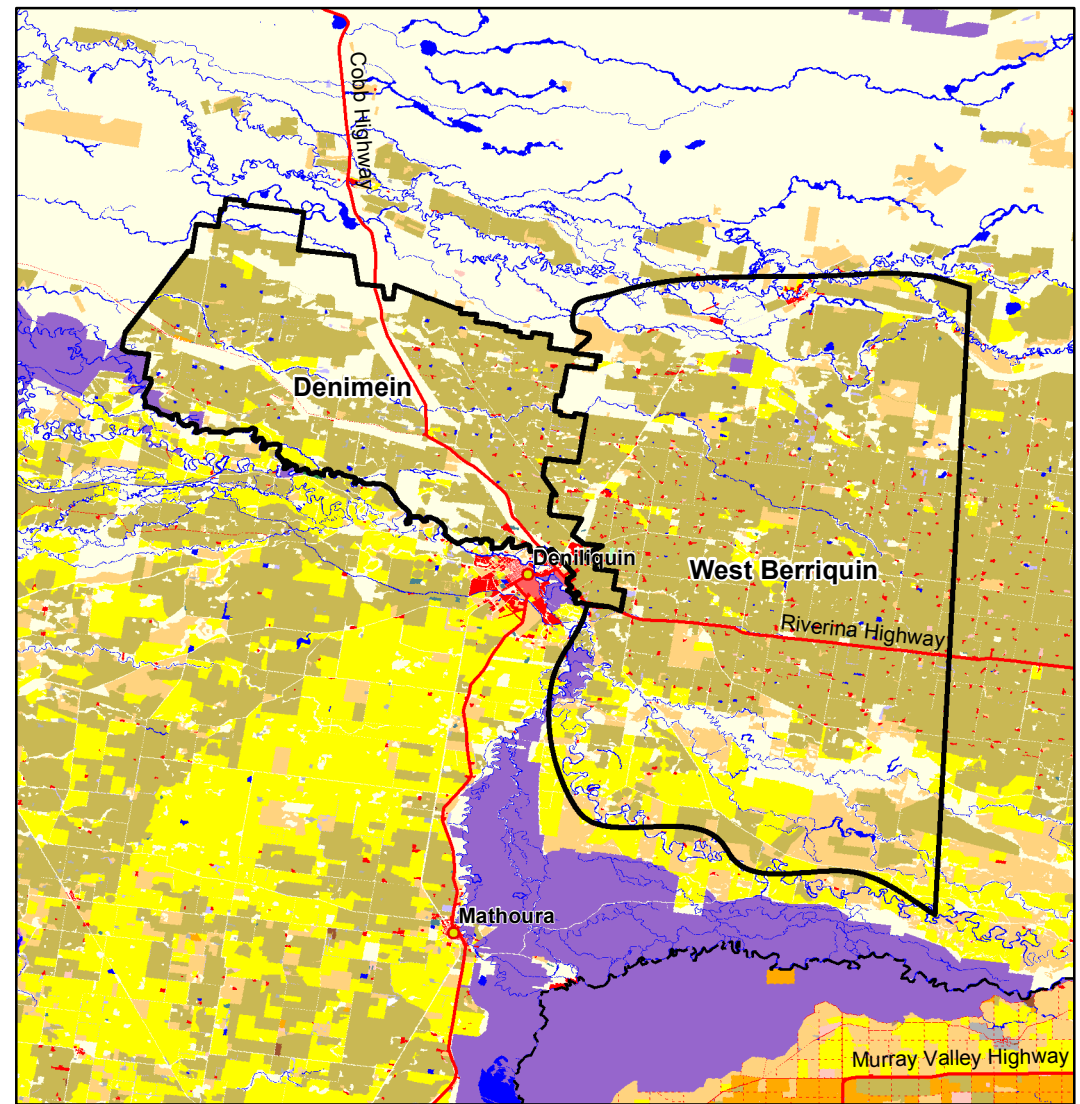
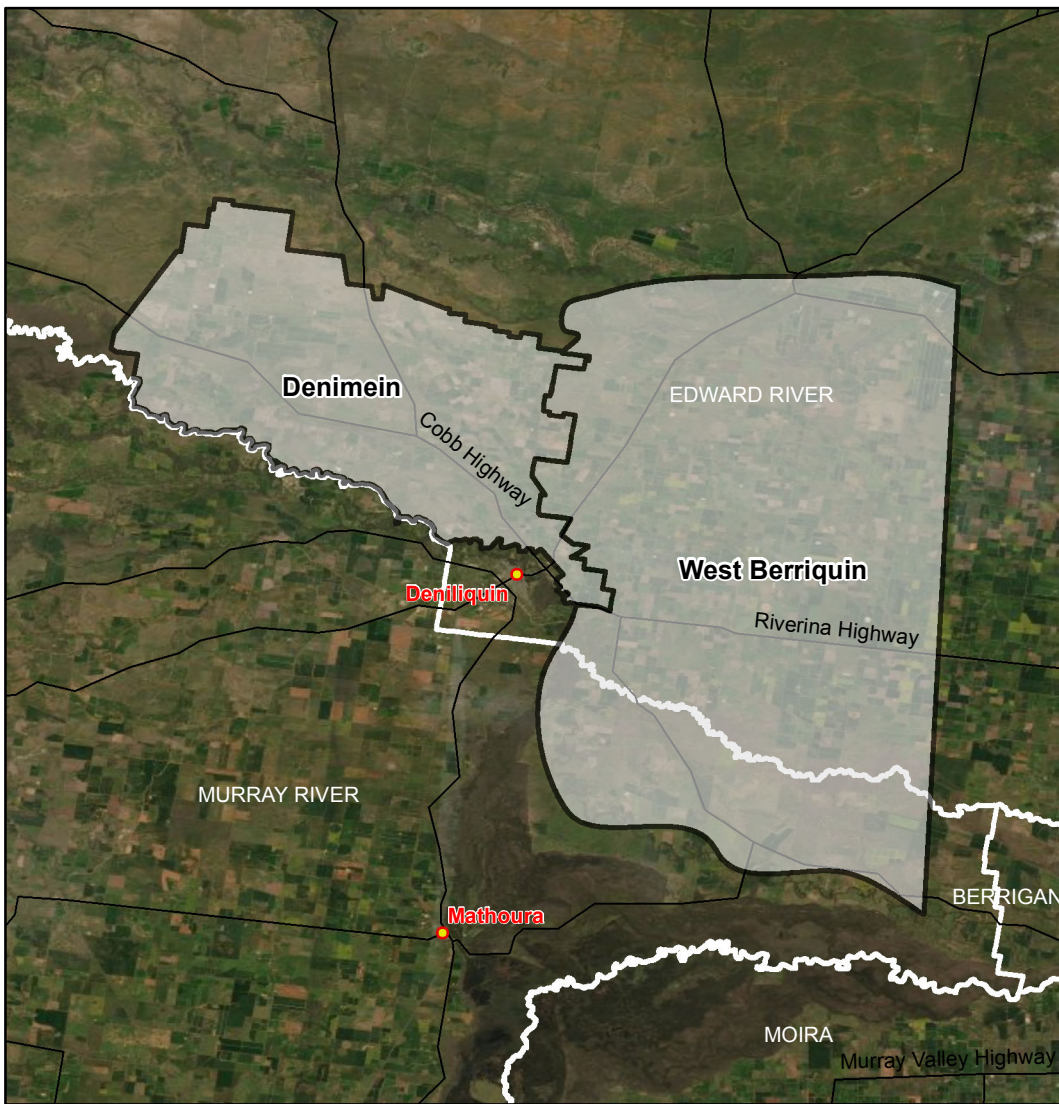
Data sources
 ABARES 2019, Catchment Scale Land Use of Australia - Update December 2018,
 PSMA 2018, Local Government Areas
 MDBA 2019, Community regions,

Map produced by ABARES, Department of Agriculture, November 2019.



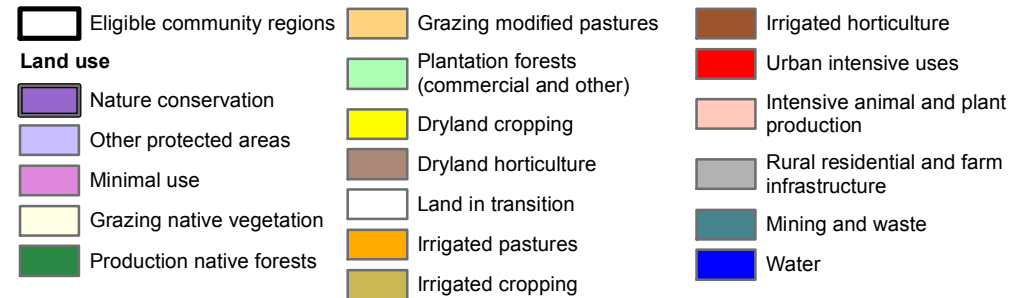
Deniboota Map

Communities eligible for funding under the MDB Economic Development Program (Round 2)



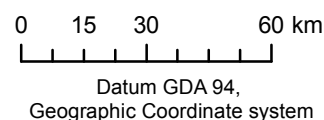
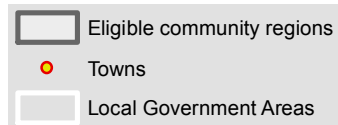
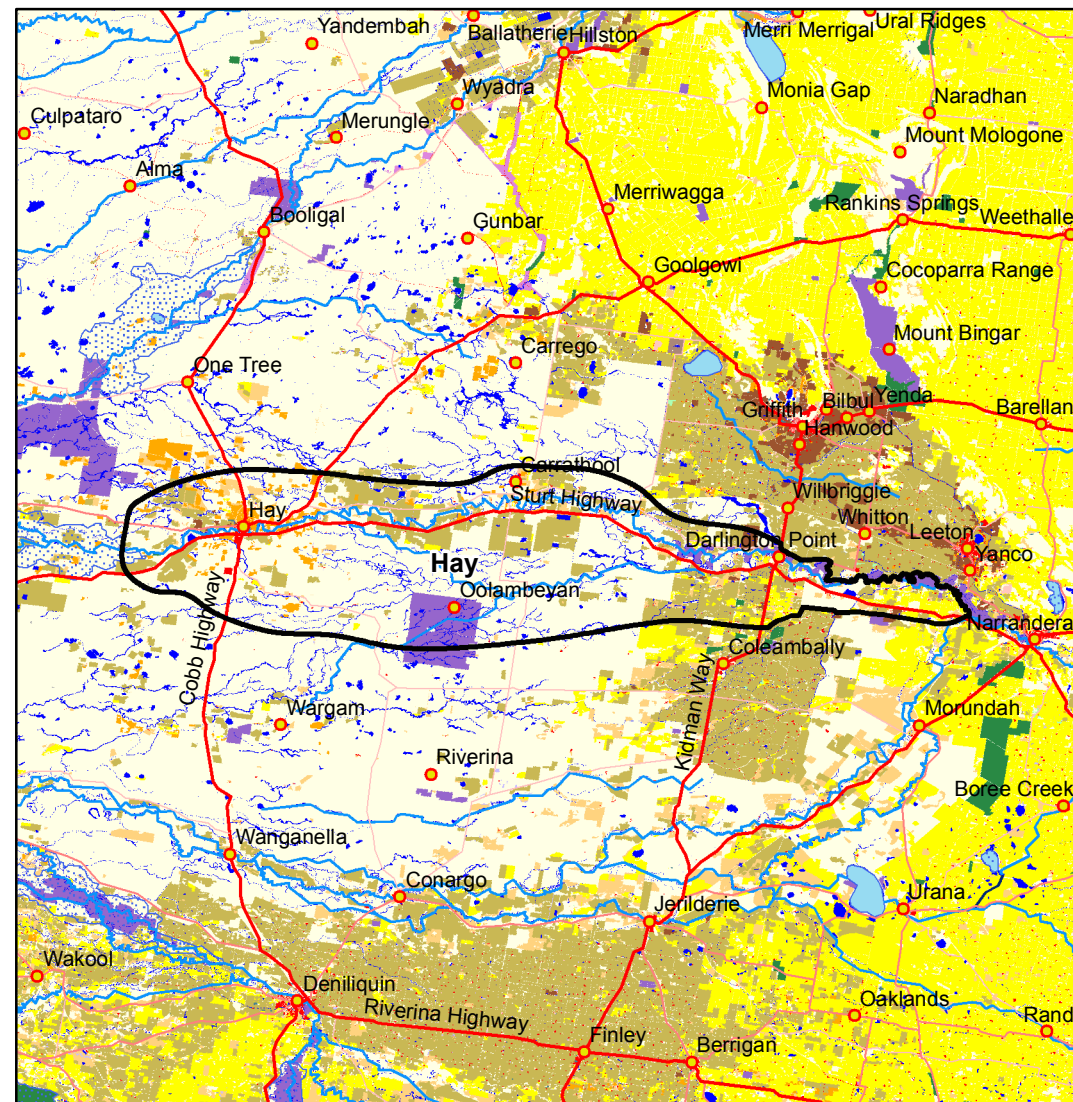
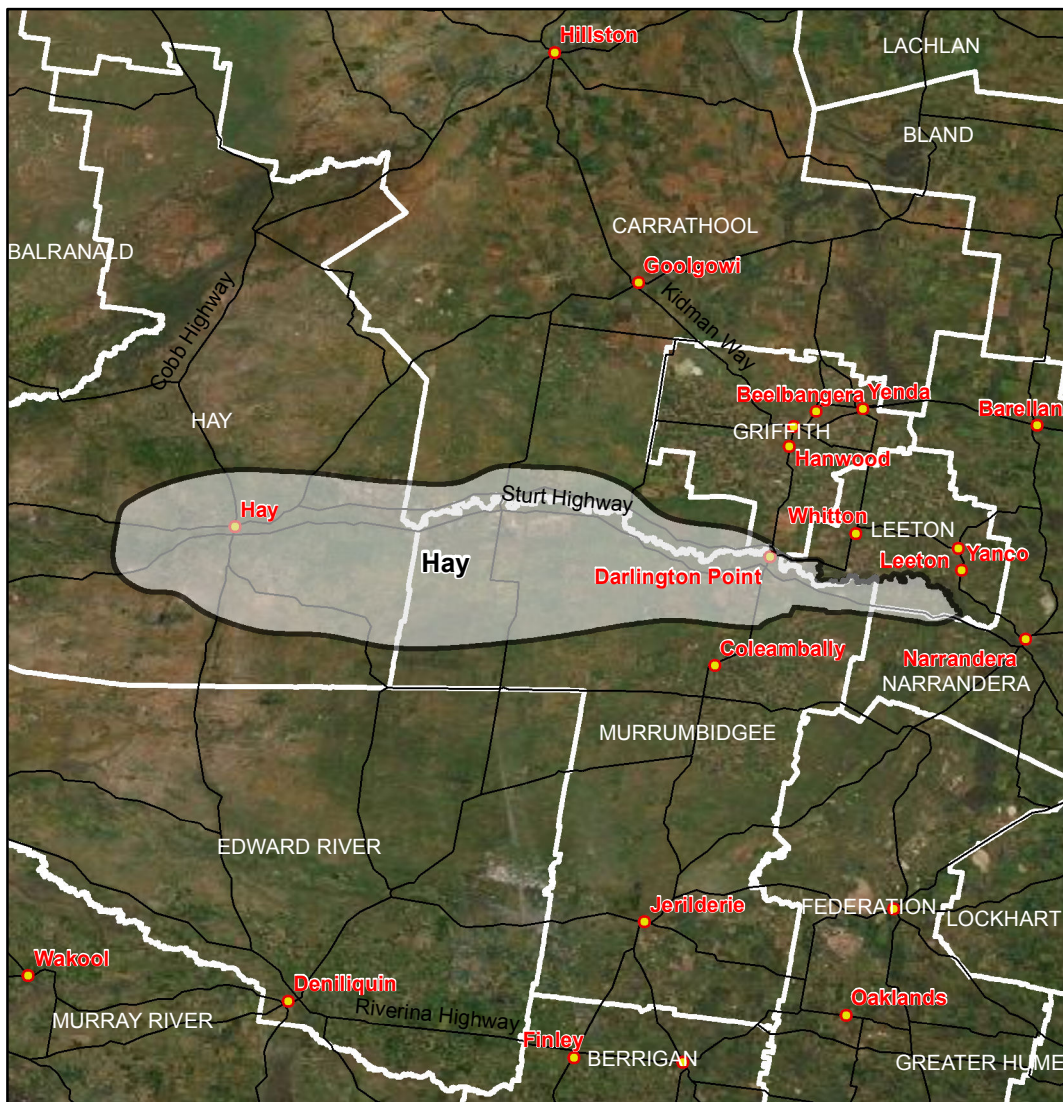
Data sources
 ABARES 2019, Catchment Scale Land Use of Australia - Update December 2018,
 PSMA 2018, Local Government Areas
 MDBA 2019, Community regions,

Map produced by ABARES, Department of Agriculture, November 2019.



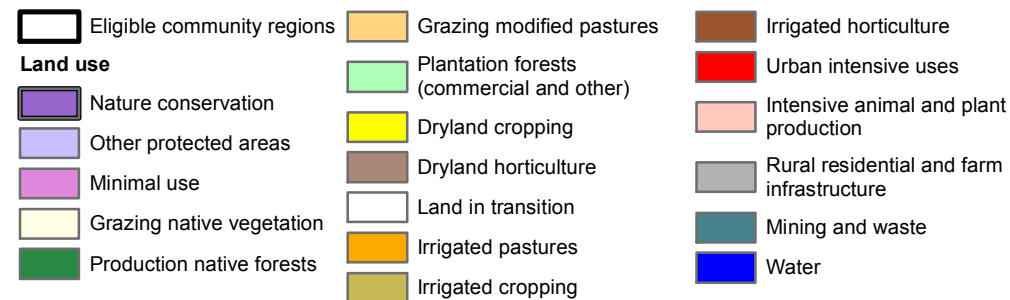
Denimein, West Berriquin Map

Communities eligible for funding under the MDB Economic Development Program (Round 2)



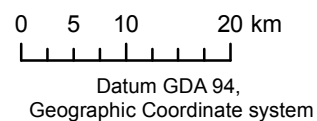
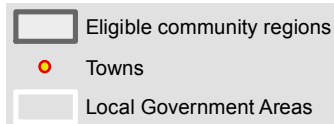
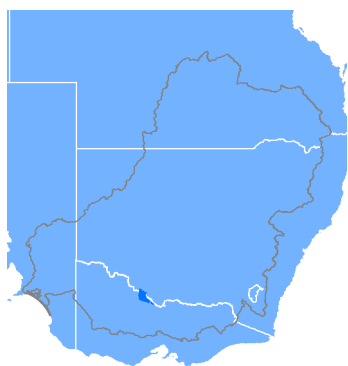
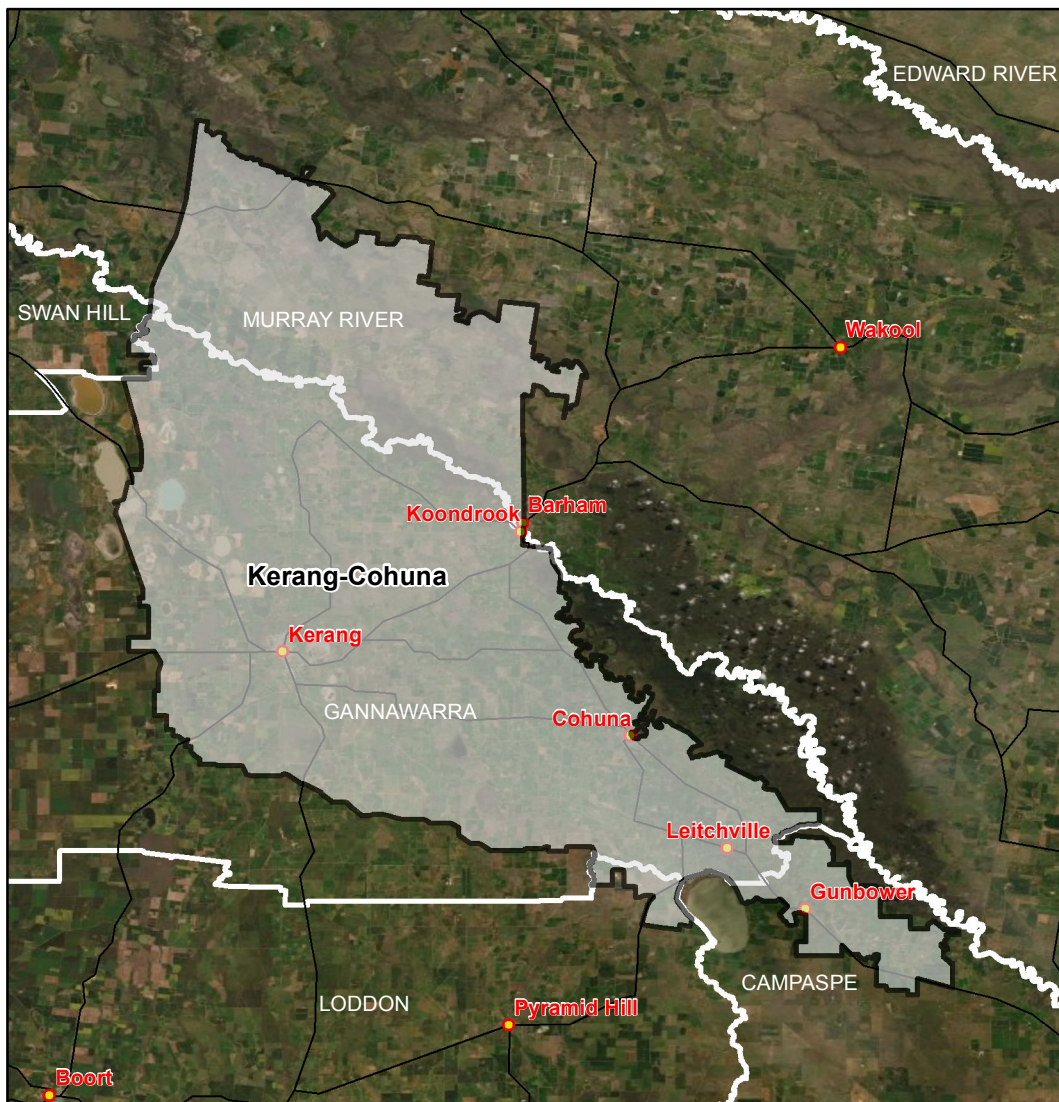
Data sources
 ABARES 2019, Catchment Scale Land Use of Australia - Update December 2018,
 PSMA 2018, Local Government Areas
 MDBA 2019, Community regions,

Map produced by ABARES, Department of Agriculture, November 2019.



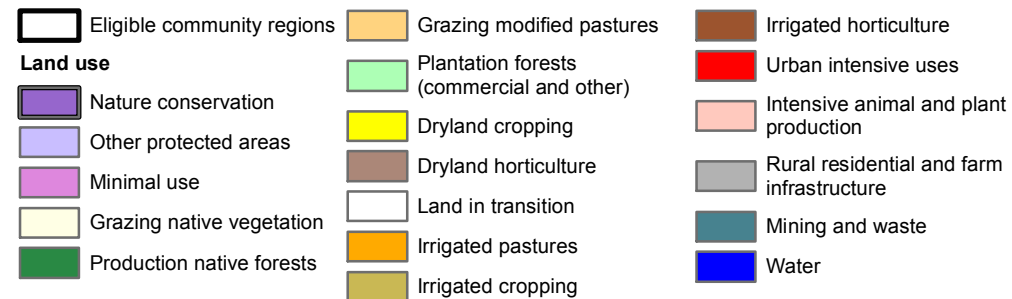
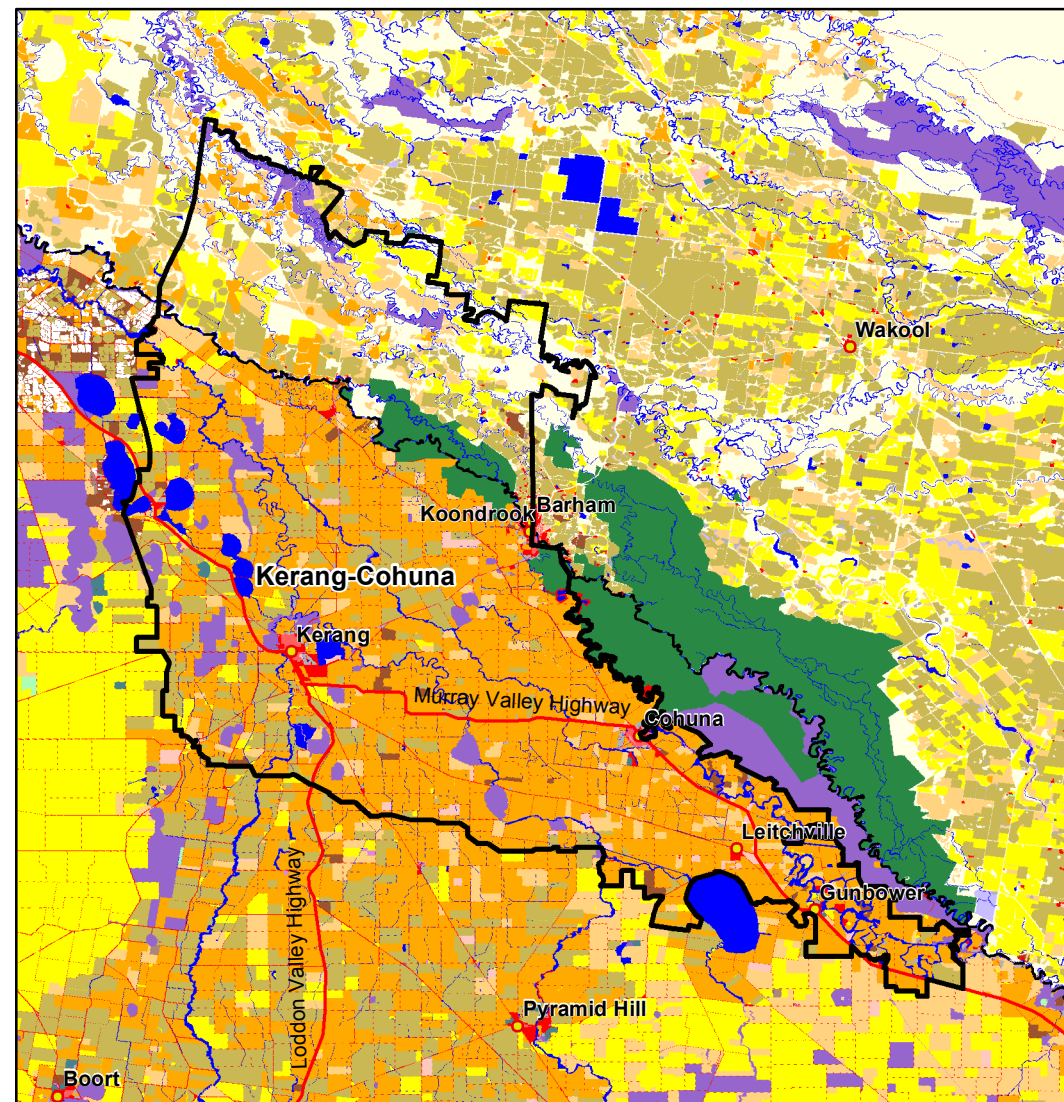
Hay Map

Communities eligible for funding under the MDB Economic Development Program (Round 2)



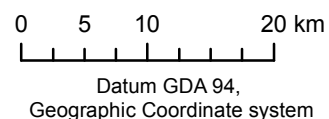
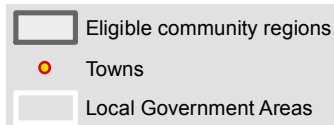
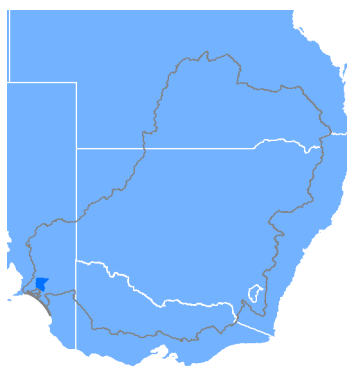
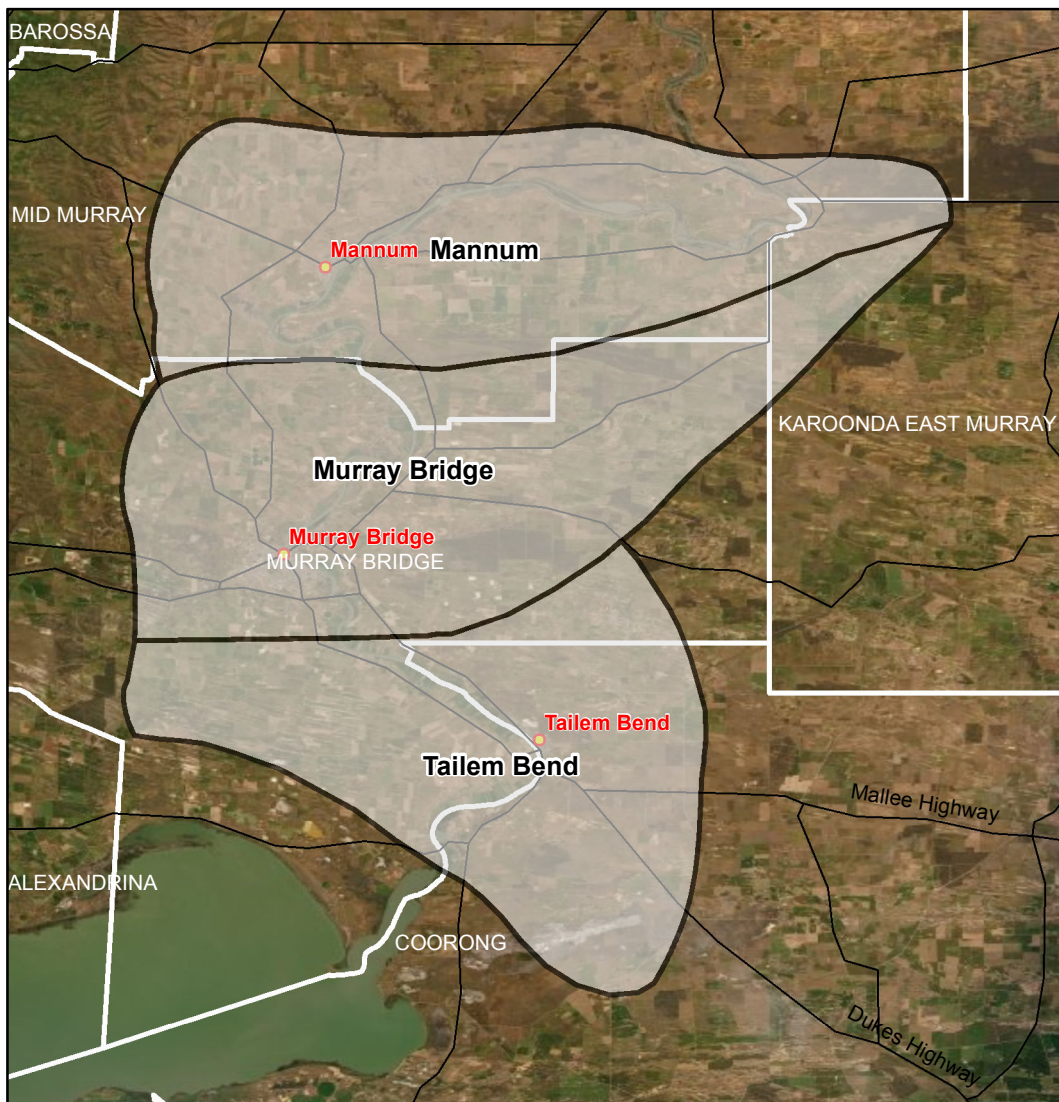
Data sources
ABARES 2019, Catchment Scale Land Use of Australia - Update December 2018,
PSMA 2018, Local Government Areas
MDBA 2019, Community regions,

Map produced by ABARES, Department of Agriculture, November 2019.



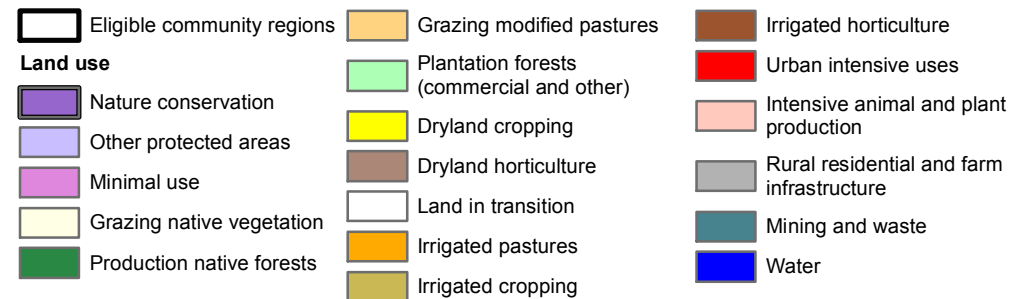
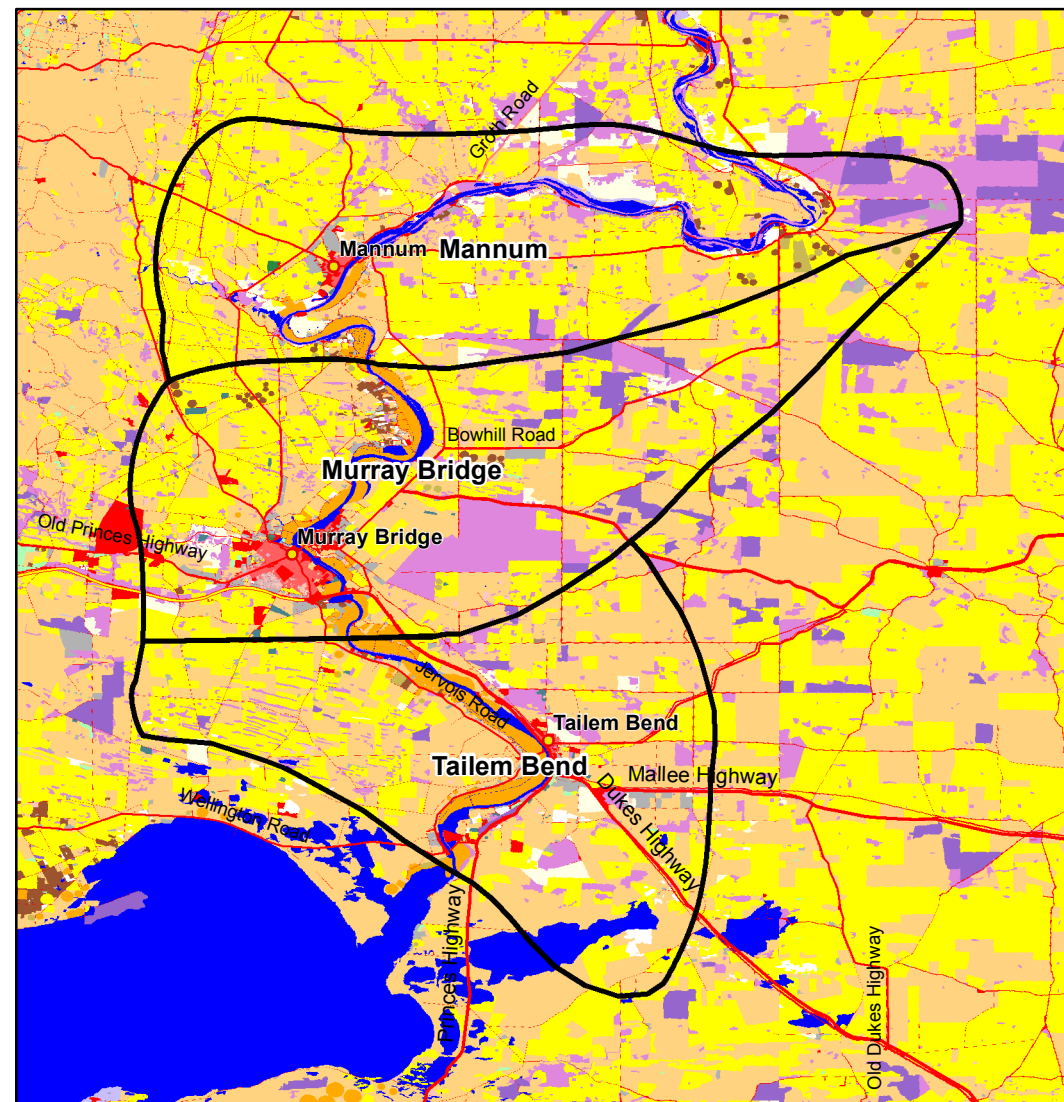
Kerang-Cohuna Map

Communities eligible for funding under the MDB Economic Development Program (Round 2)

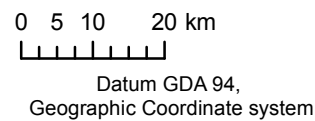
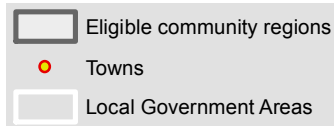
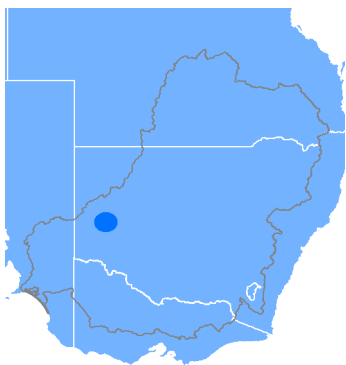
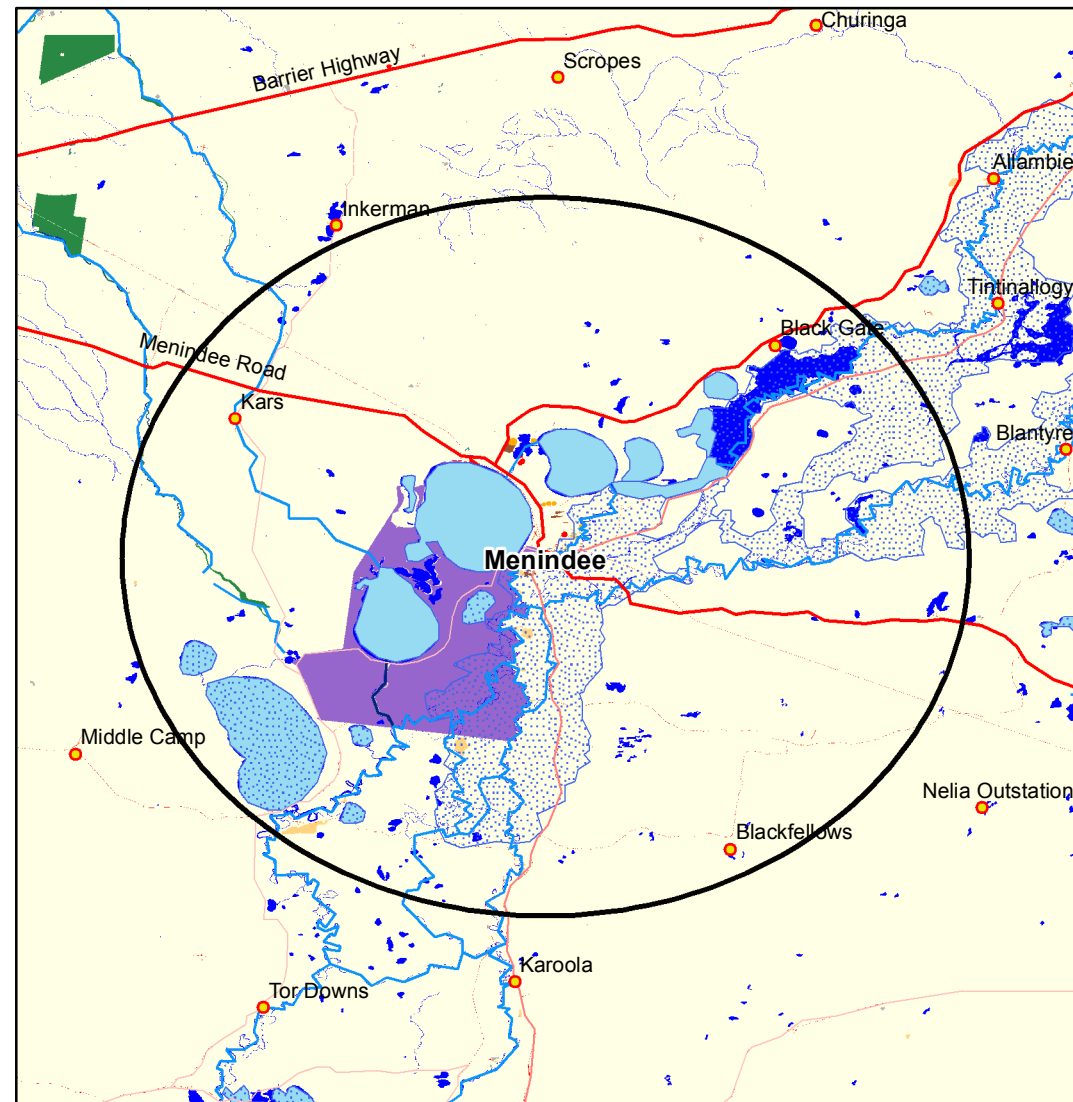
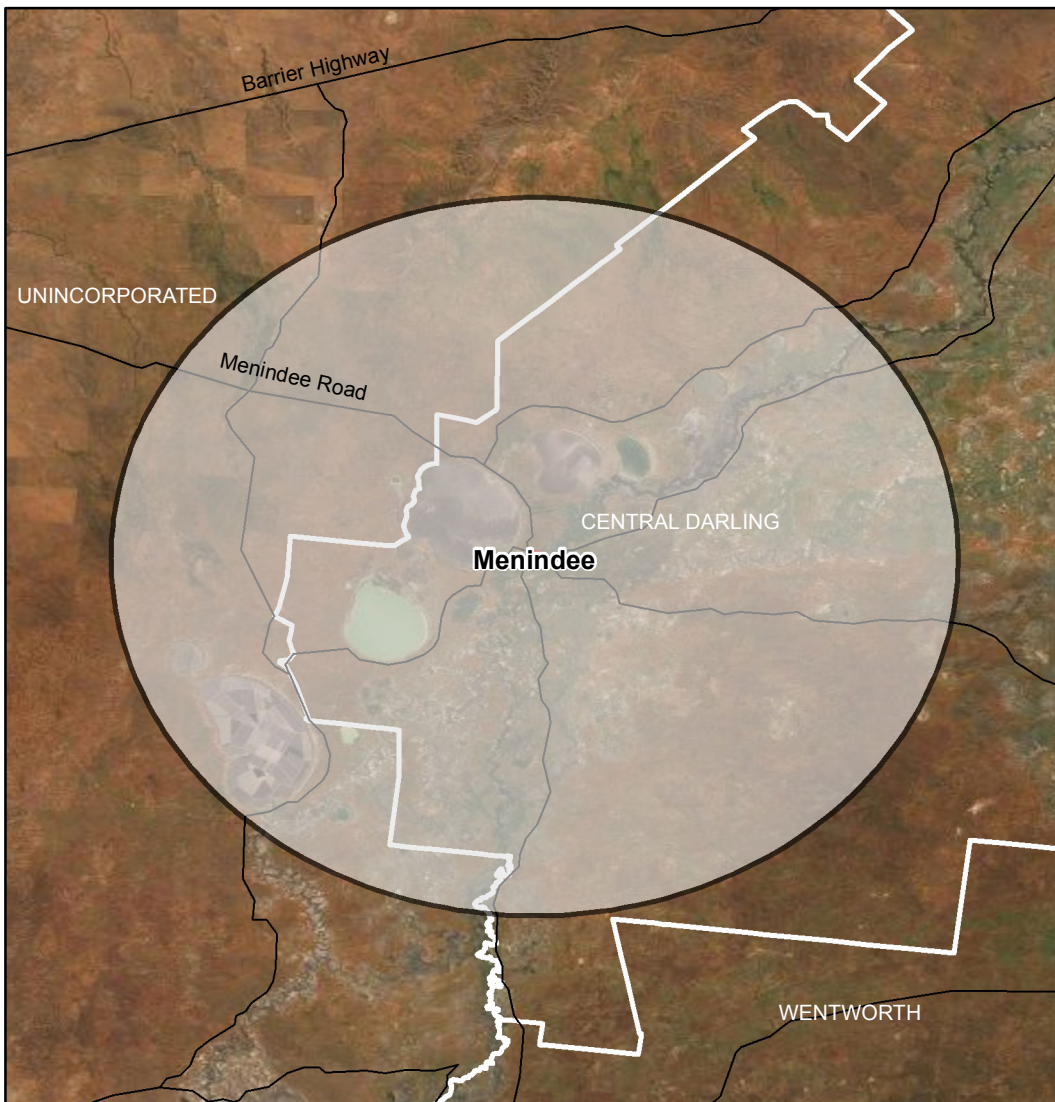


Data sources
ABARES 2019, Catchment Scale Land Use of Australia - Update December 2018,
PSMA 2018, Local Government Areas
MDBA 2019, Community regions,

Map produced by ABARES, Department of Agriculture, November 2019.

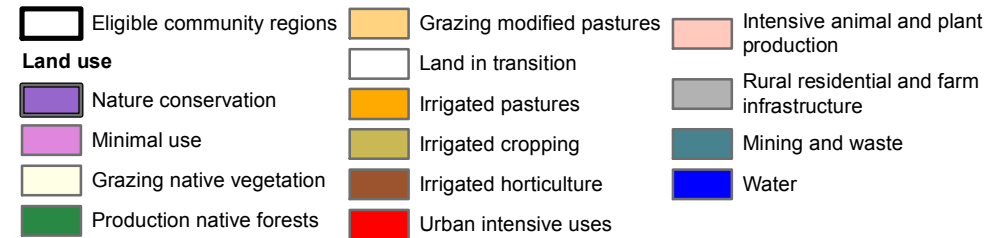


Mannum, Murray Bridge, Tailem Bend Map
Communities eligible for funding under the MDB Economic Development Program (Round 2)



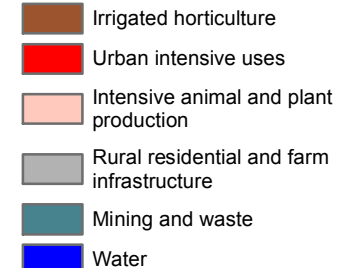
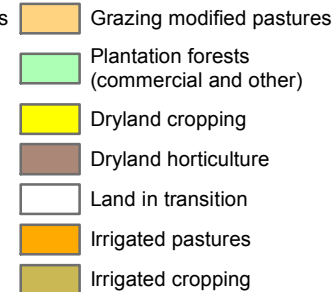
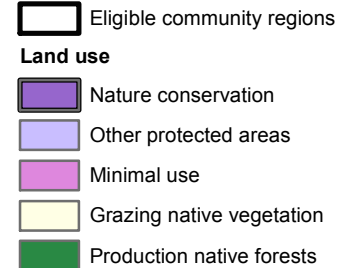
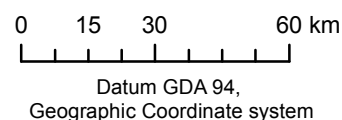
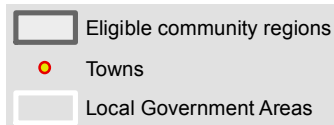
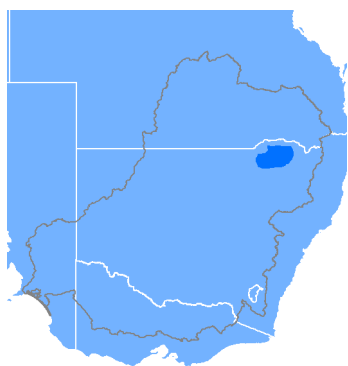
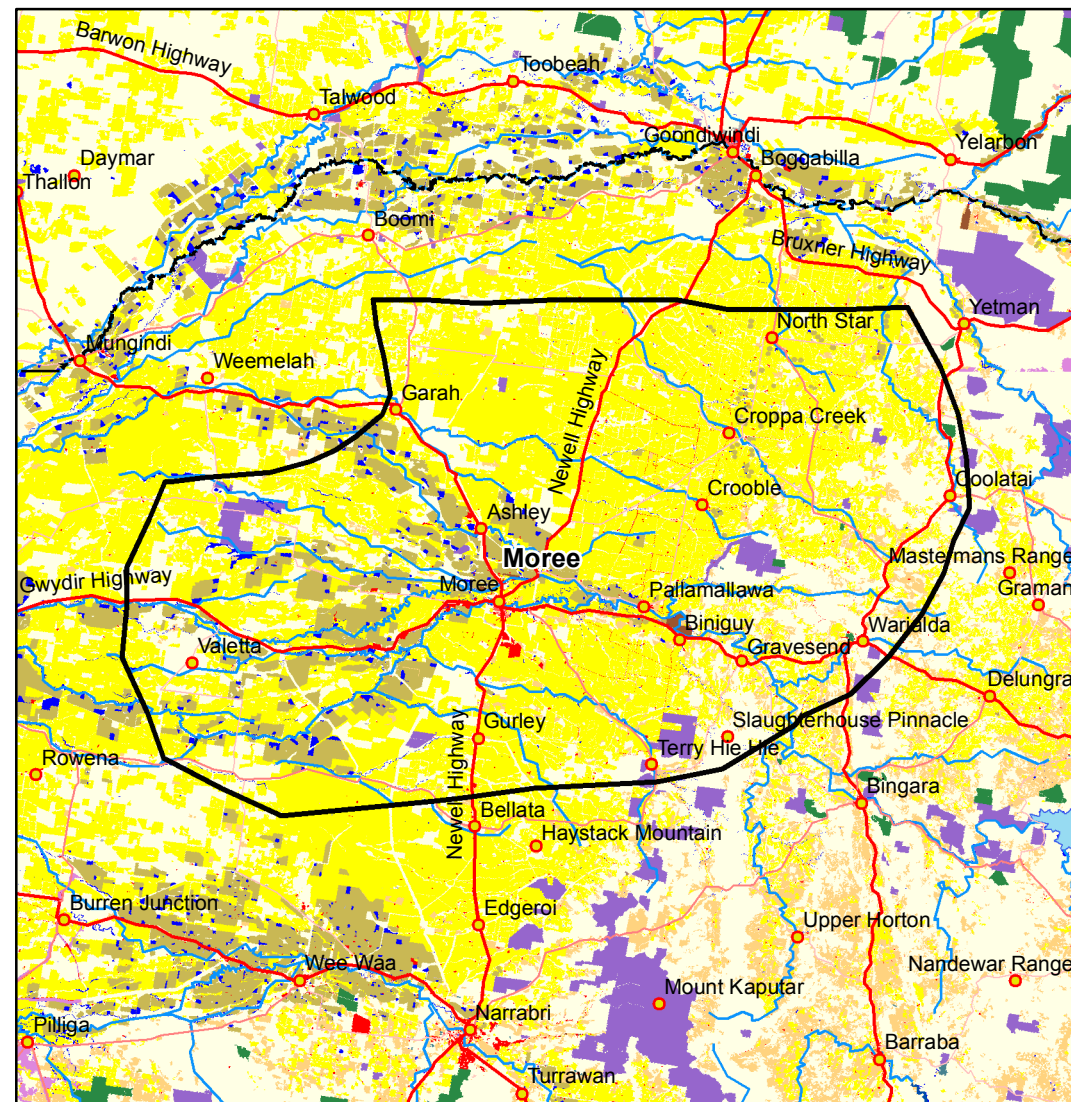
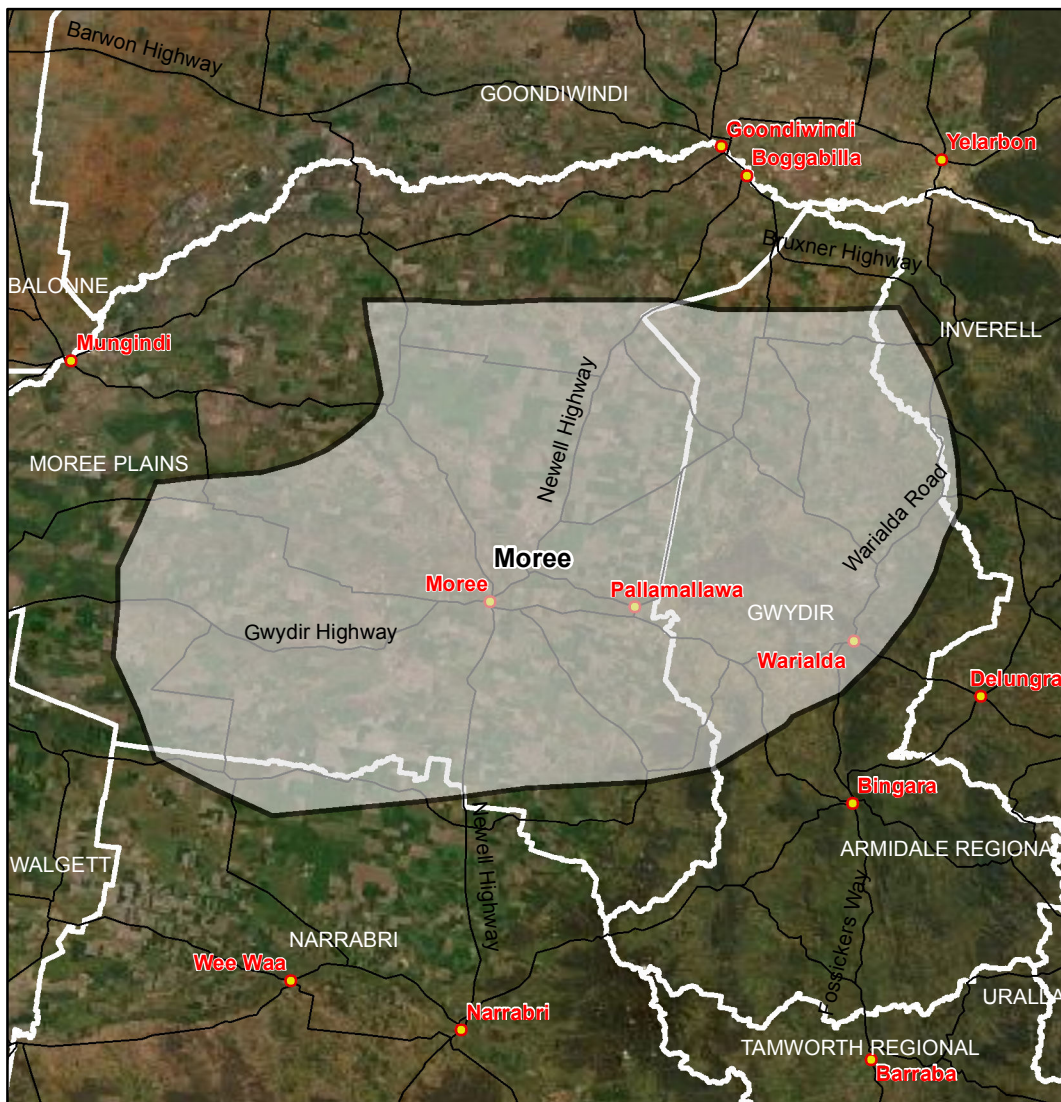
Data sources
 ABARES 2019, Catchment Scale Land Use of Australia - Update December 2018,
 PSMA 2018, Local Government Areas
 MDBA 2019, Community regions,

Map produced by ABARES, Department of Agriculture, November 2019.



Menindee Map

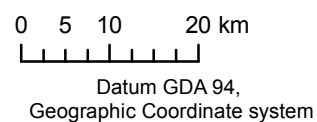
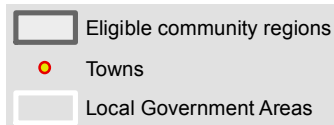
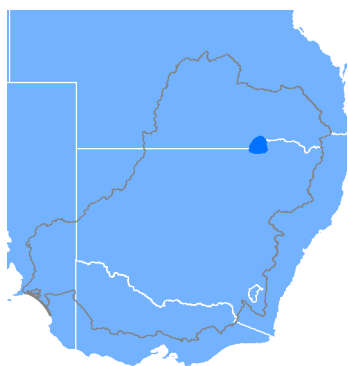
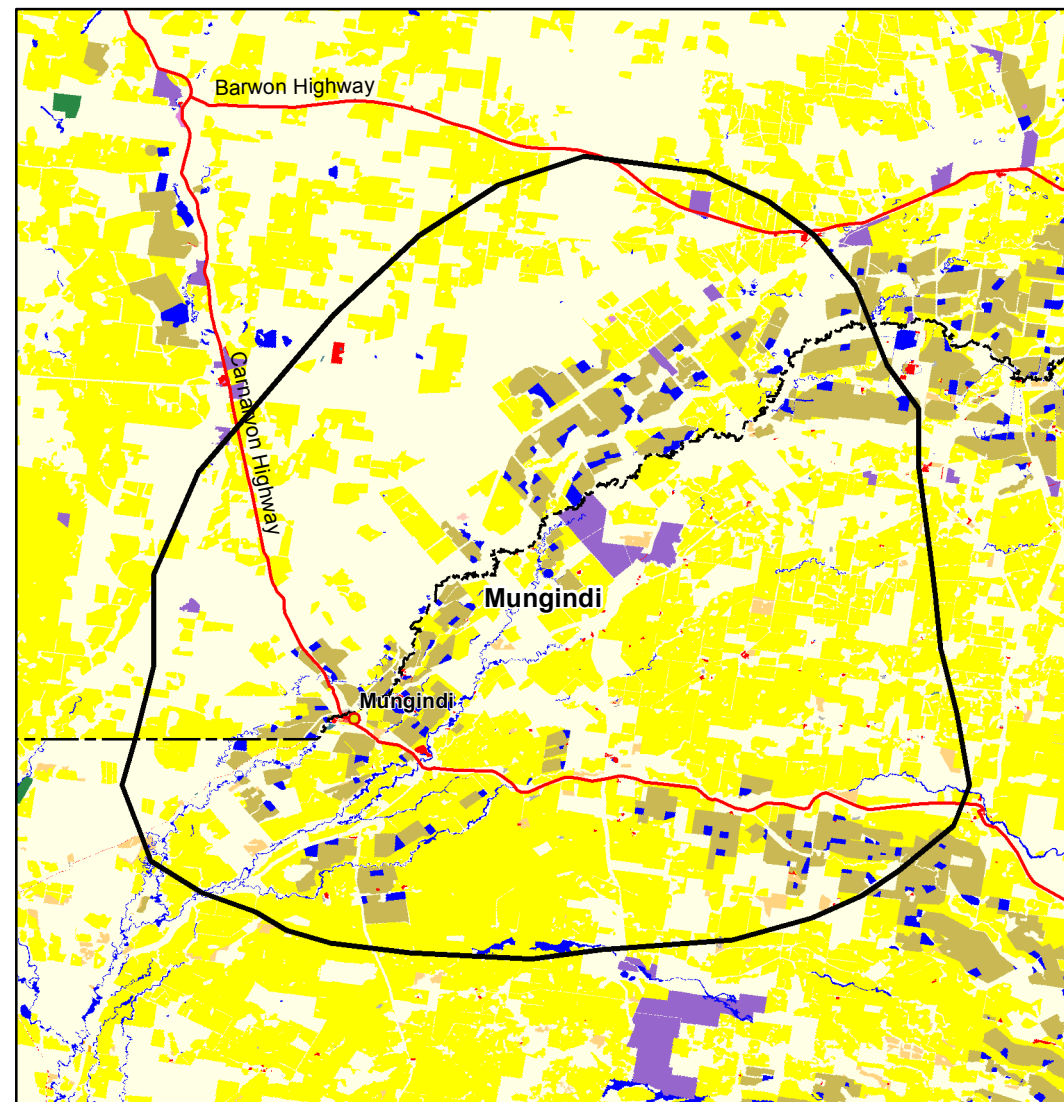
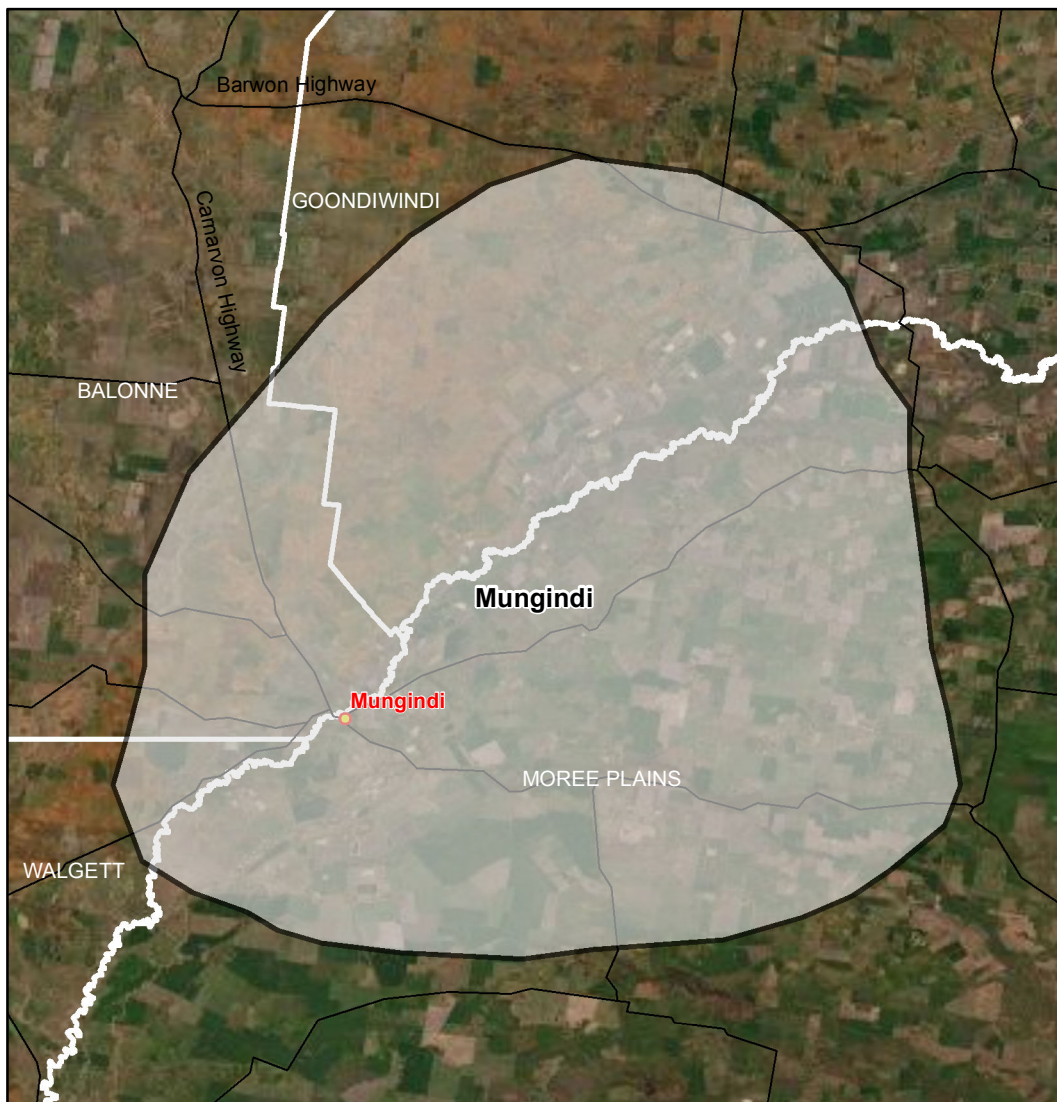
Communities eligible for funding under the MDB Economic Development Program (Round 2)



Data sources
 ABARES 2019, Catchment Scale Land Use of Australia - Update December 2018,
 PSMA 2018, Local Government Areas
 MDBA 2019, Community regions,

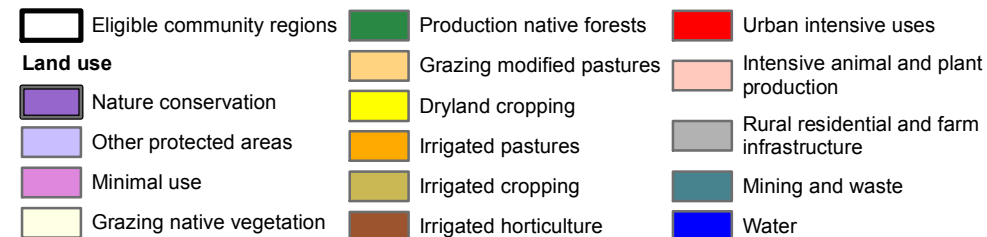
Map produced by ABARES, Department of Agriculture, November 2019.

Moree Map Communities eligible for funding under the MDB Economic Development Program (Round 2)



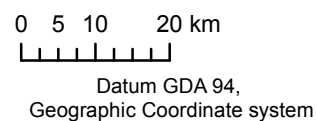
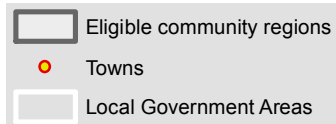
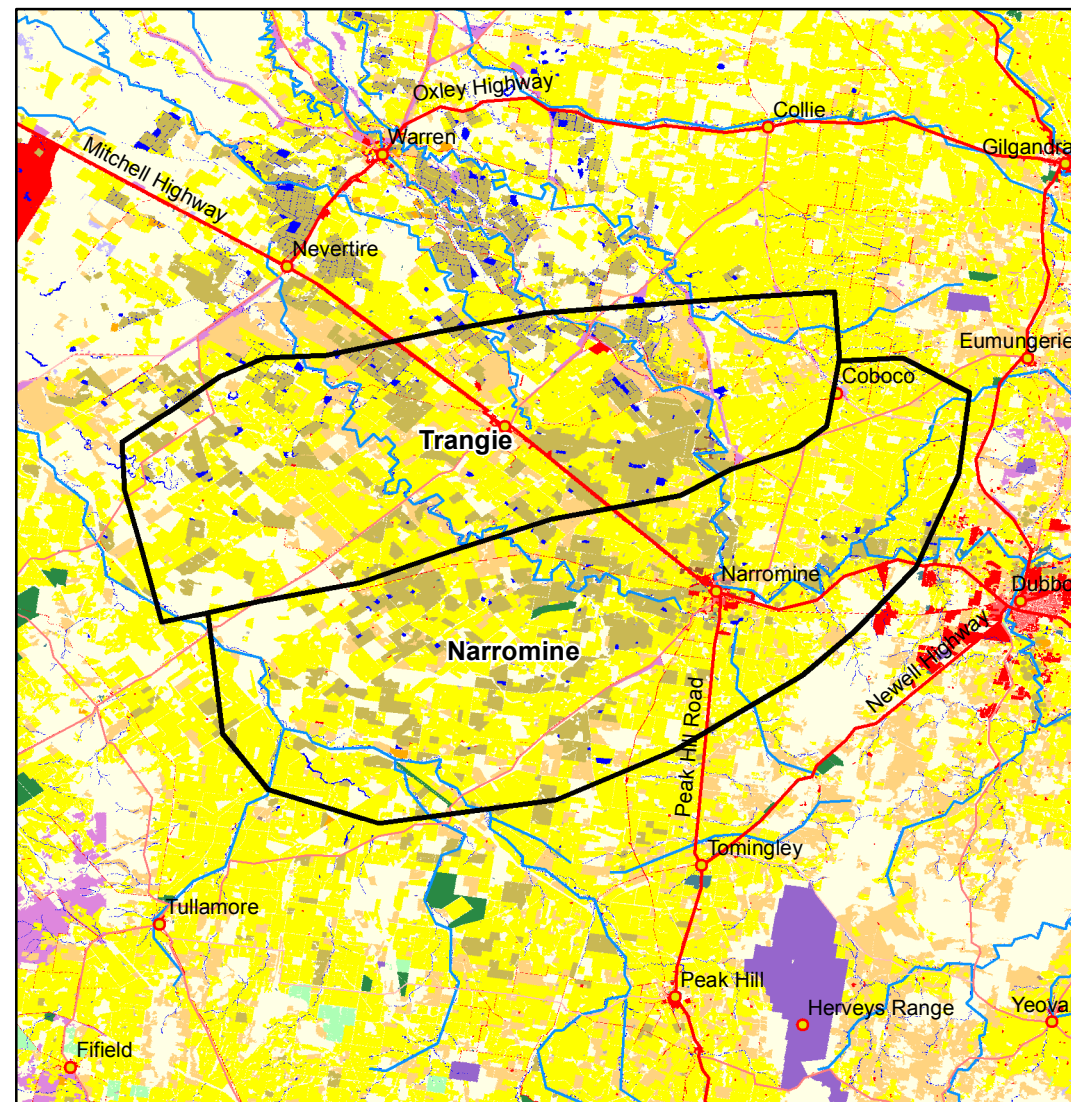
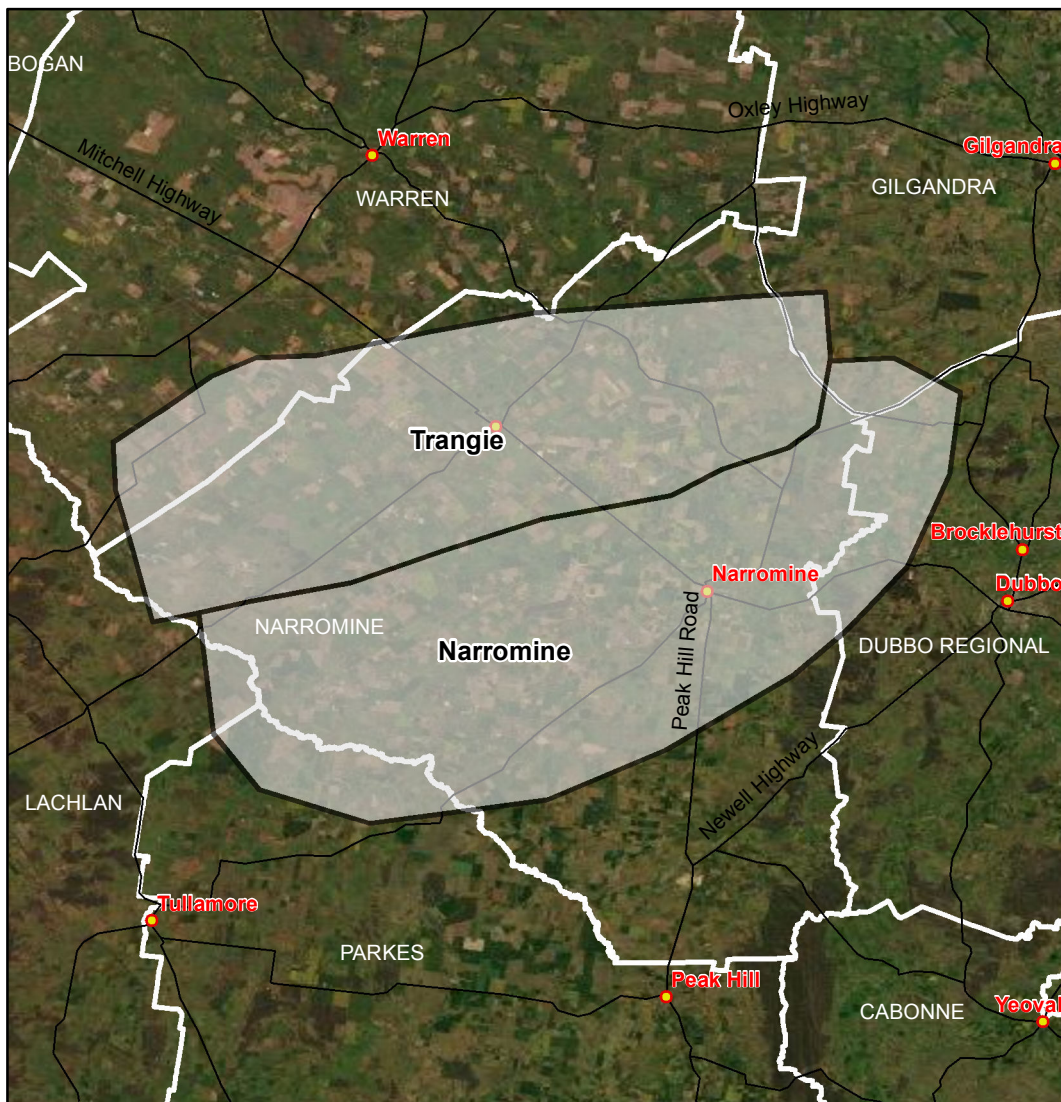
Data sources
ABARES 2019, Catchment Scale Land Use of Australia - Update December 2018,
PSMA 2018, Local Government Areas
MDBA 2019, Community regions,

Map produced by ABARES, Department of Agriculture, November 2019.



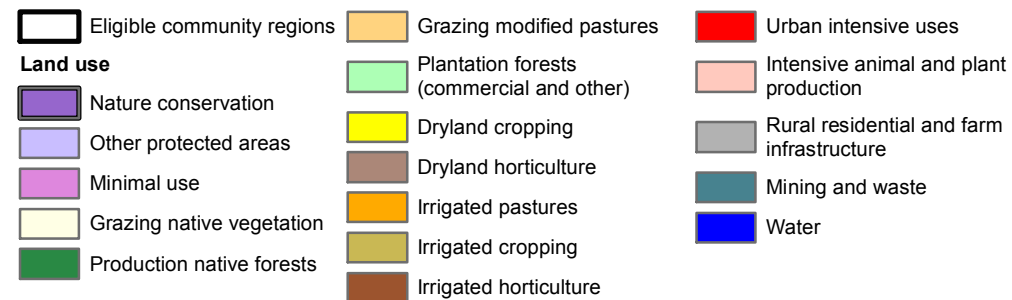
Mungindi Map

Communities eligible for funding under the MDB Economic Development Program (Round 2)

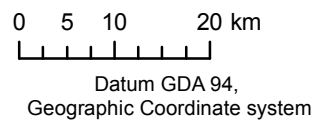
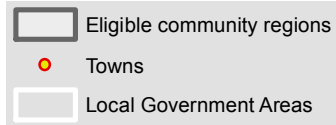
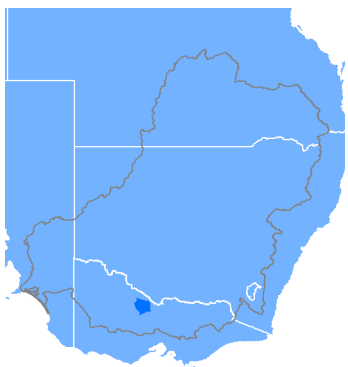
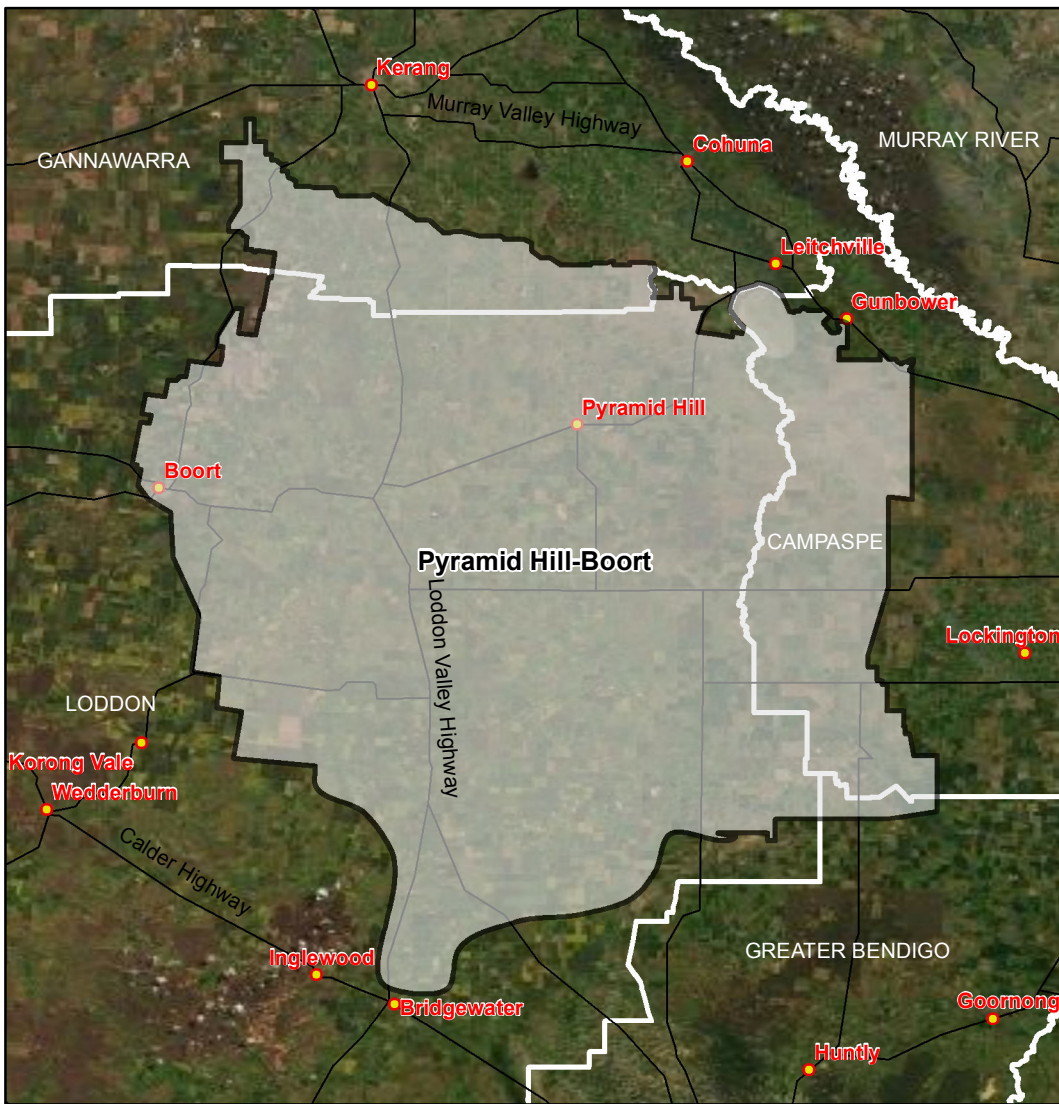


Data sources
 ABARES 2019, Catchment Scale Land Use of Australia - Update December 2018,
 PSMA 2018, Local Government Areas
 MDBA 2019, Community regions,

Map produced by ABARES, Department of Agriculture, November 2019.

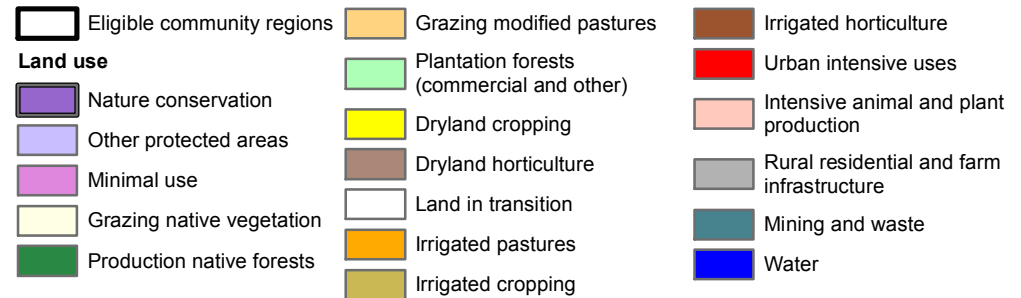
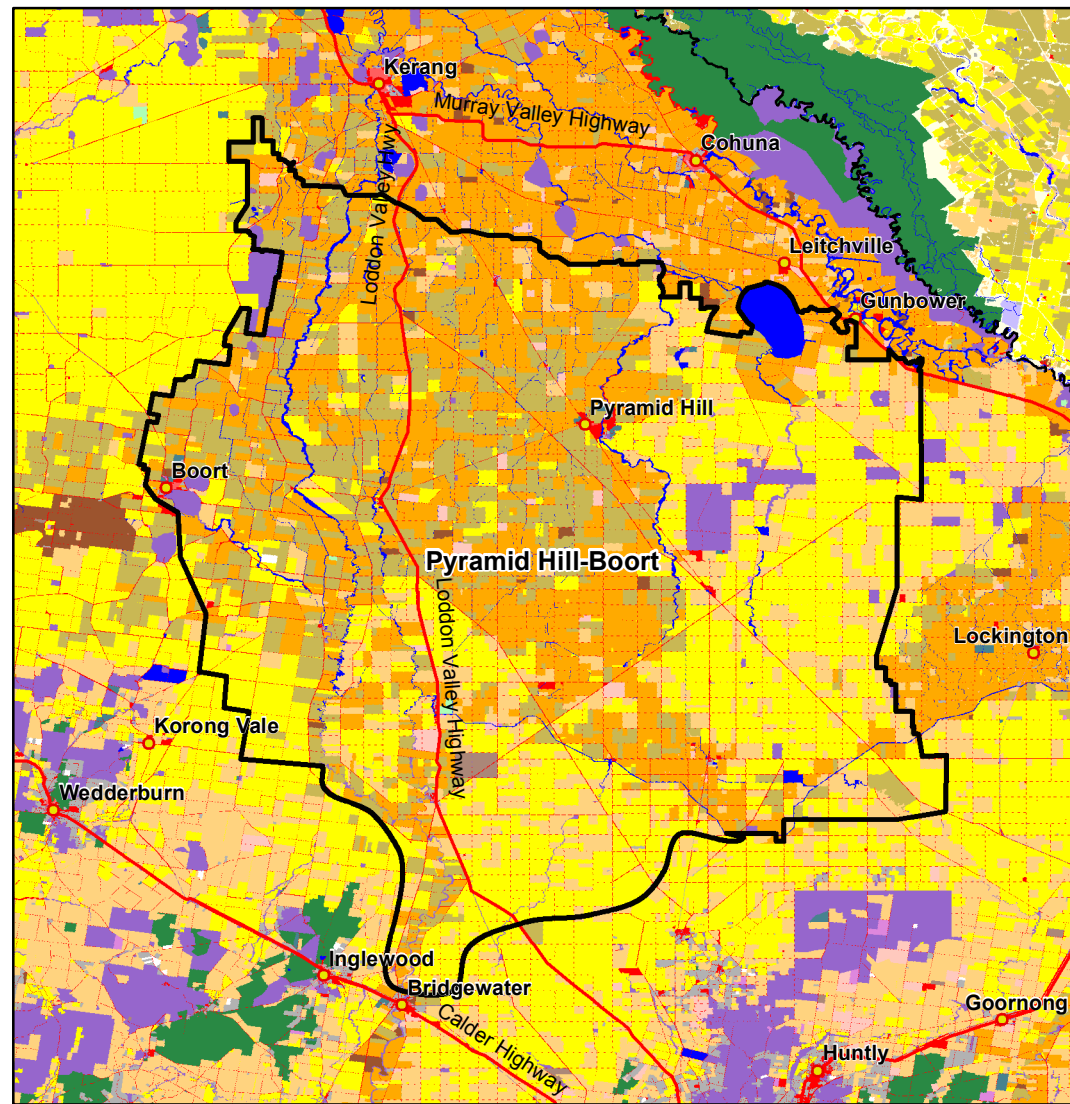


Narromine, Trangie Map Communities eligible for funding under the MDB Economic Development Program (Round 2)



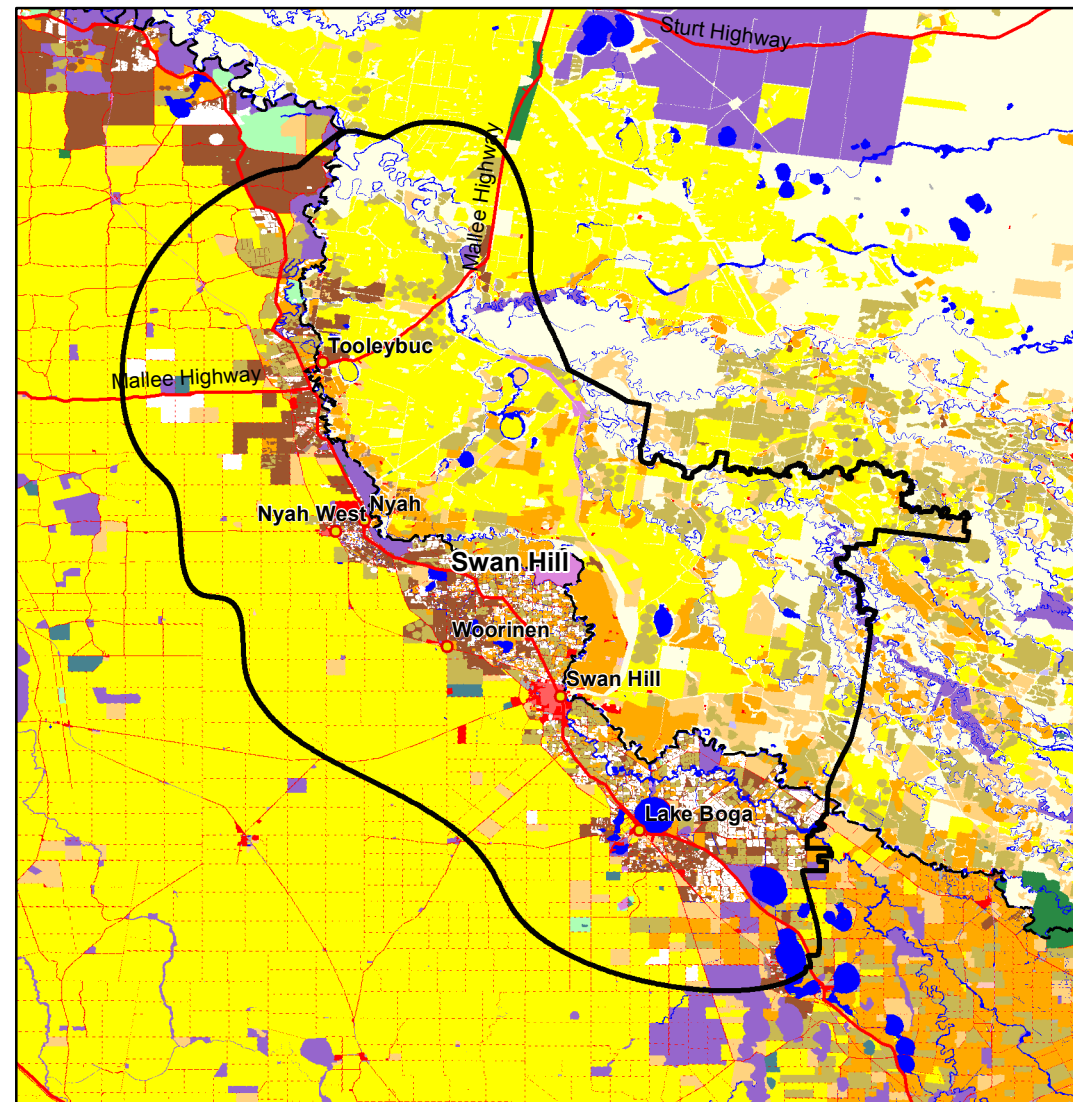
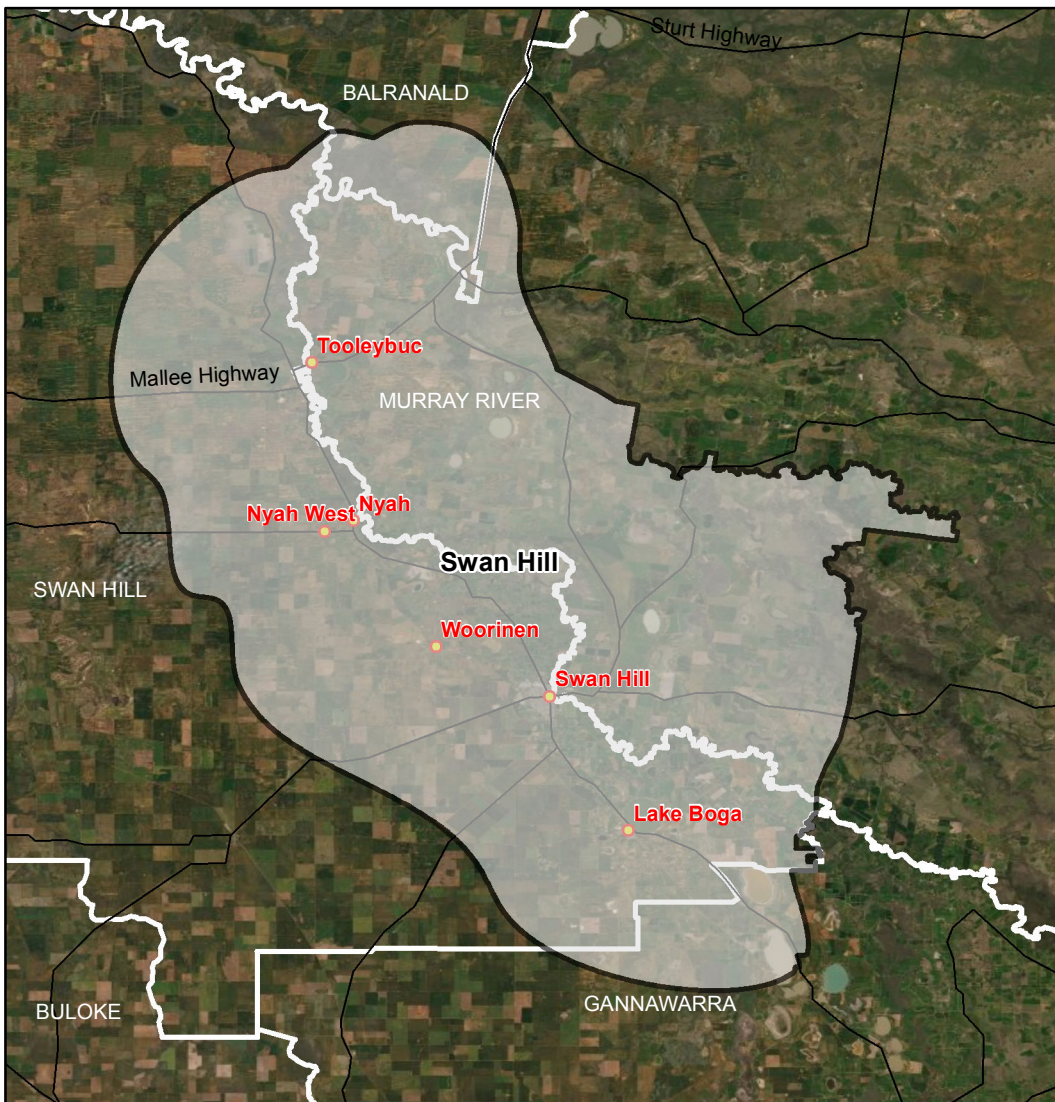
Data sources
ABARES 2019, Catchment Scale Land Use of Australia - Update December 2018,
PSMA 2018, Local Government Areas
MDBA 2019, Community regions,

Map produced by ABARES, Department of Agriculture, November 2019.



Pyramid Hill-Boort Map

Communities eligible for funding under the MDB Economic Development Program (Round 2)



- Eligible community regions
- Towns
- Local Government Areas

0 5 10 20 km
Datum GDA 94,
Geographic Coordinate system

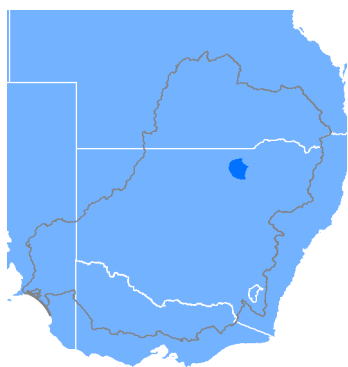
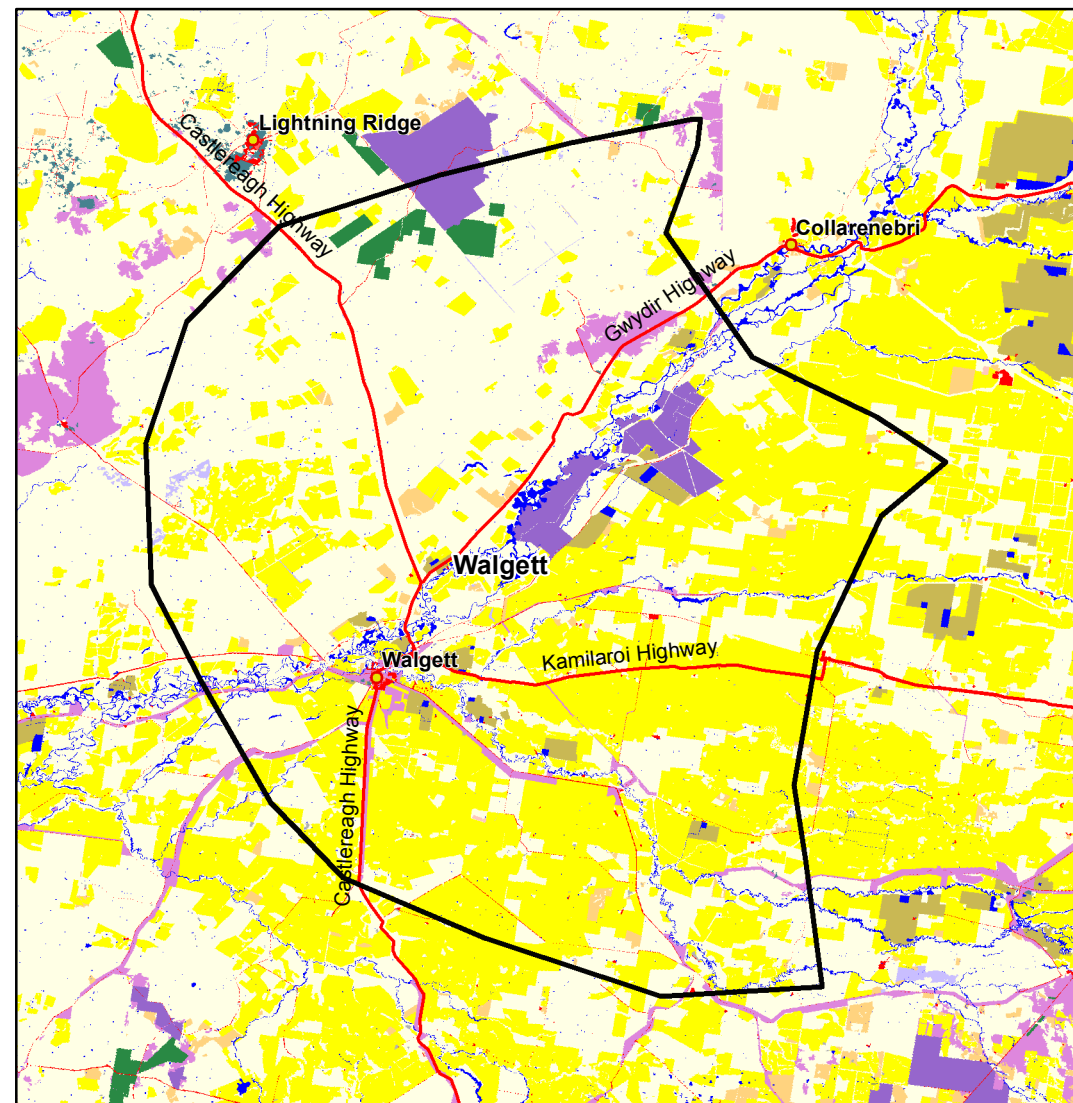
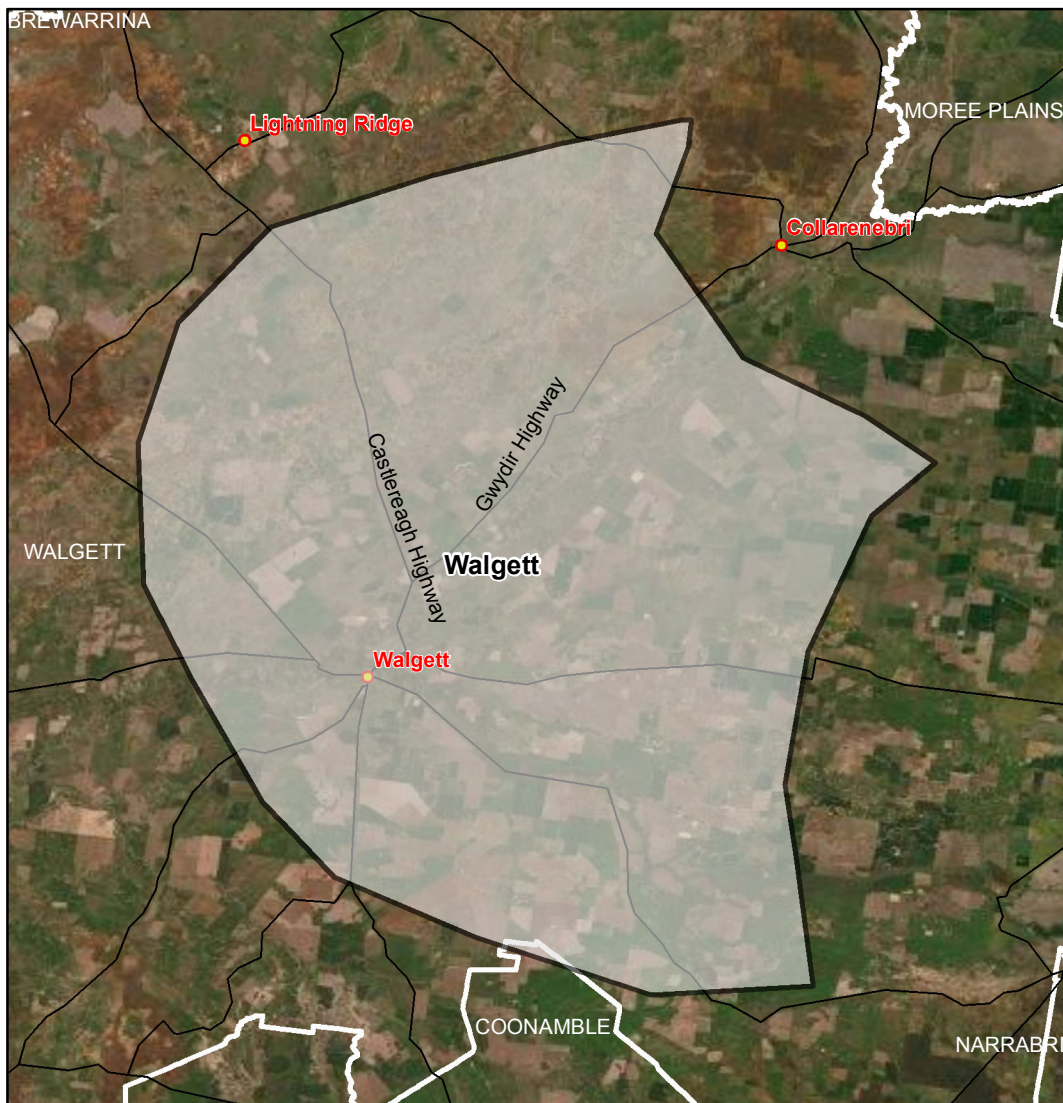
Data sources
ABARES 2019, Catchment Scale Land Use of Australia - Update December 2018,
PSMA 2018, Local Government Areas
MDBA 2019, Community regions,

Map produced by ABARES, Department of Agriculture, November 2019.

- | | | |
|---|---|---|
| Eligible community regions | Grazing modified pastures | Irrigated horticulture |
| Land use | Plantation forests (commercial and other) | Urban intensive uses |
| Nature conservation | Dryland cropping | Intensive animal and plant production |
| Other protected areas | Dryland horticulture | Rural residential and farm infrastructure |
| Minimal use | Land in transition | Mining and waste |
| Grazing native vegetation | Irrigated pastures | Water |
| Production native forests | Irrigated cropping | |

Swan Hill Map

Communities eligible for funding under the MDB Economic Development Program (Round 2)



- Eligible community regions
- Towns
- Local Government Areas

0 5 10 20 km
Datum GDA 94,
Geographic Coordinate system

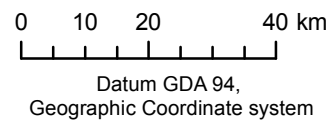
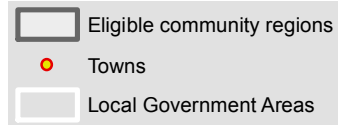
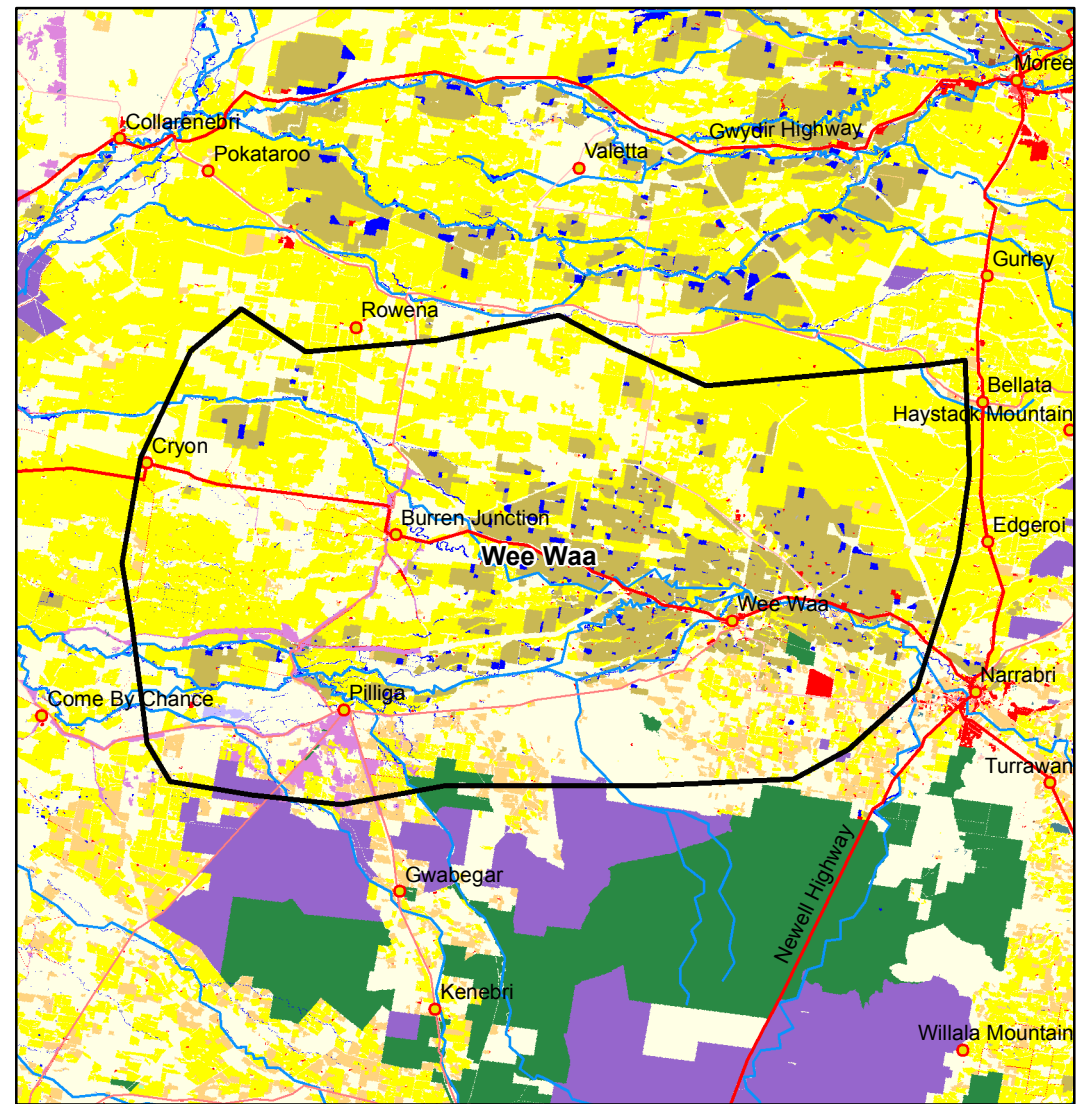
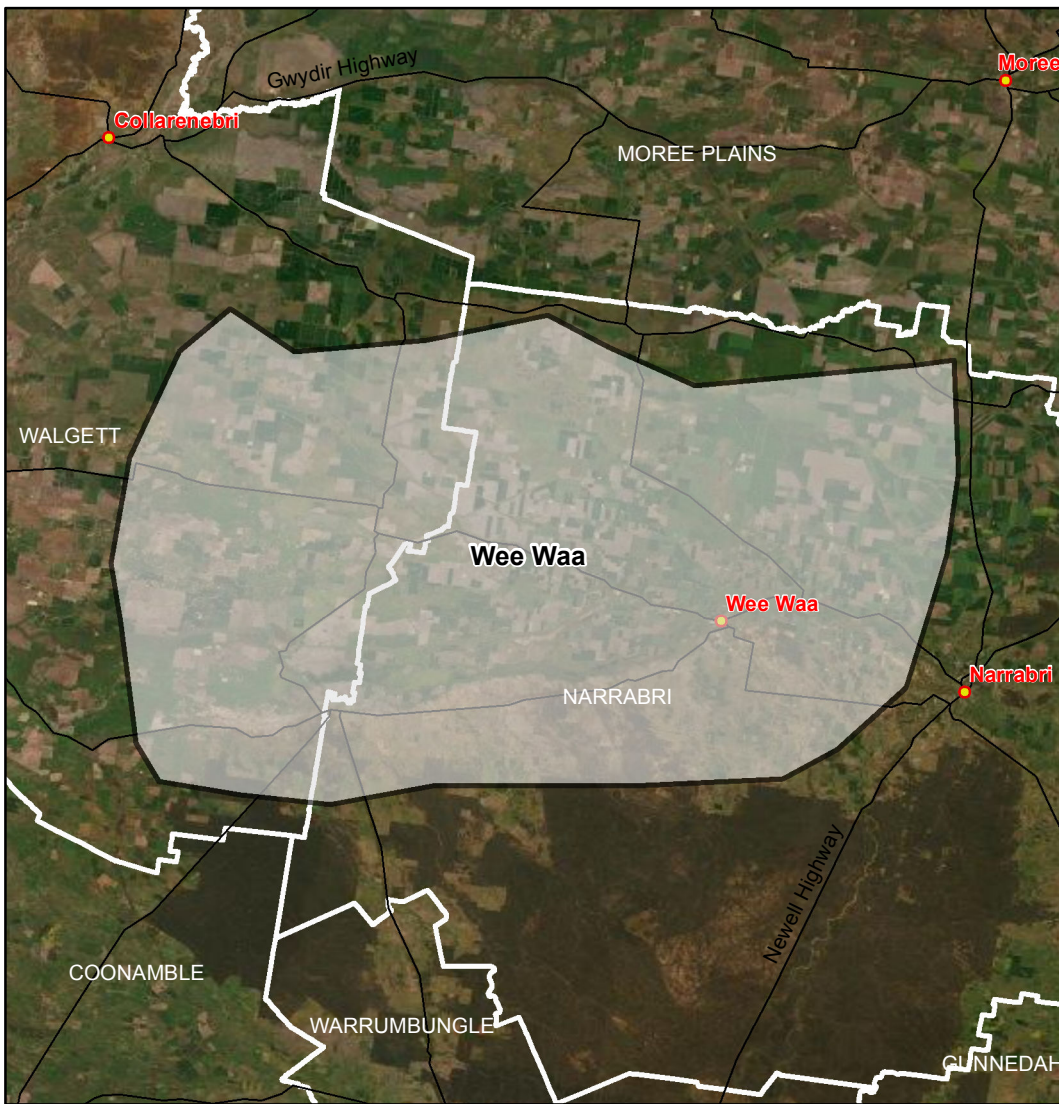
Data sources
ABARES 2019, Catchment Scale Land Use of Australia - Update December 2018,
PSMA 2018, Local Government Areas
MDBA 2019, Community regions,

Map produced by ABARES, Department of Agriculture, November 2019.

- Eligible community regions
- Grazing modified pastures
- Urban intensive uses
- Land use**
- Dryland cropping
- Land in transition
- Intensive animal and plant production
- Nature conservation
- Other protected areas
- Rural residential and farm infrastructure
- Irrigated pastures
- Irrigated cropping
- Mining and waste
- Minimal use
- Irrigated horticulture
- Water
- Grazing native vegetation
- Production native forests

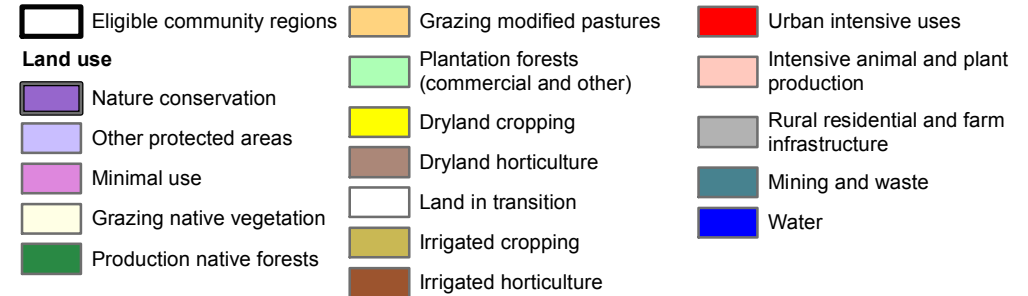
Walgett Map

Communities eligible for funding under the MDB Economic Development Program (Round 2)



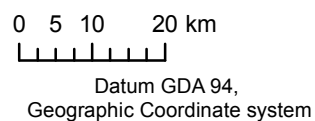
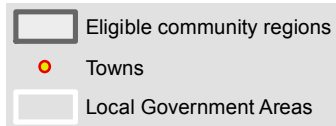
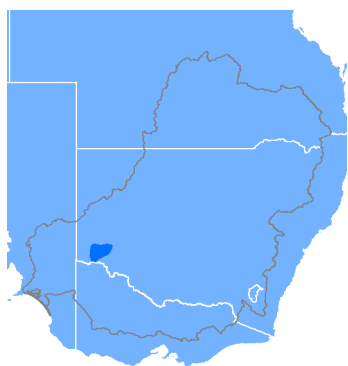
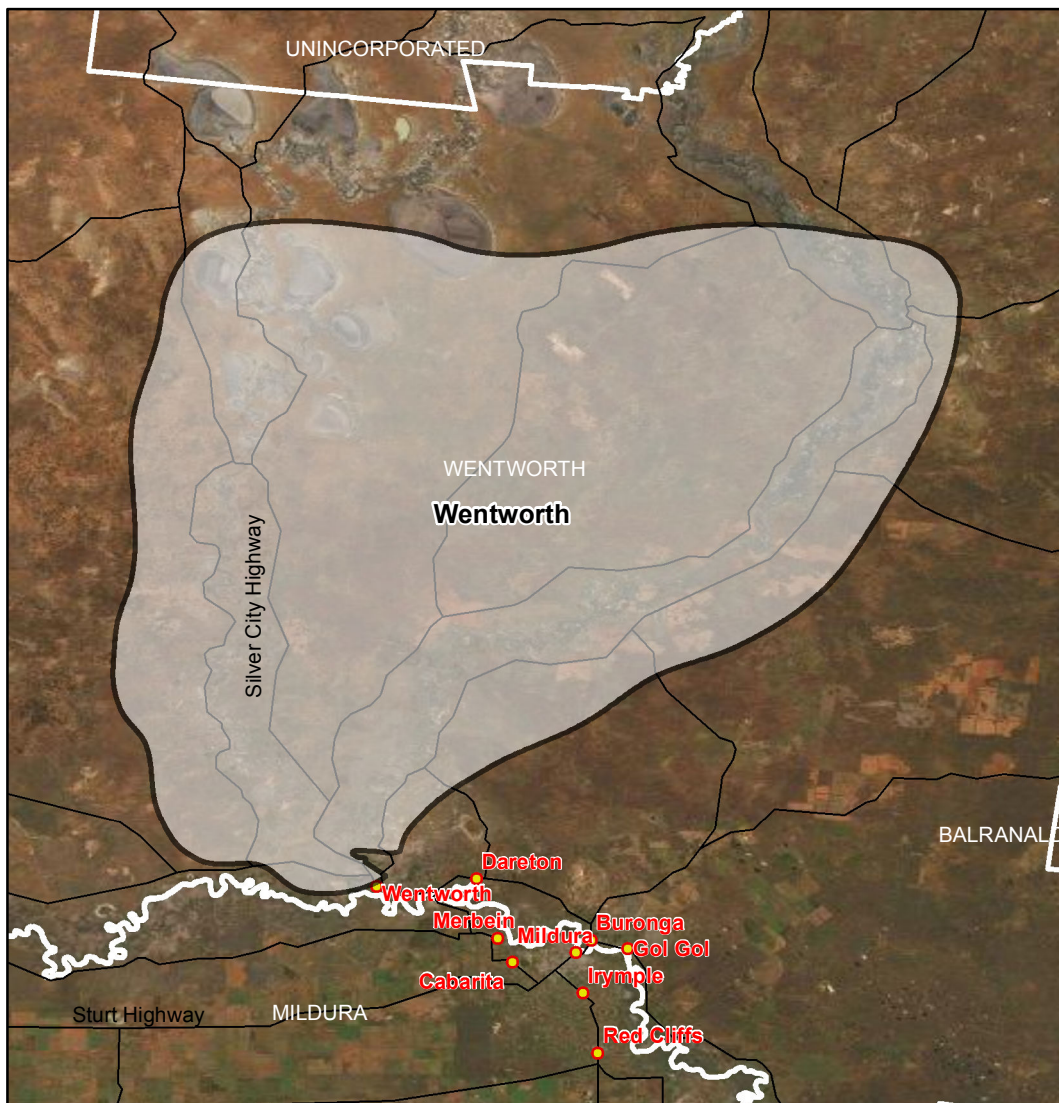
Data sources
 ABARES 2019, Catchment Scale Land Use of Australia - Update December 2018,
 PSMA 2018, Local Government Areas
 MDBA 2019, Community regions,

Map produced by ABARES, Department of Agriculture, November 2019.



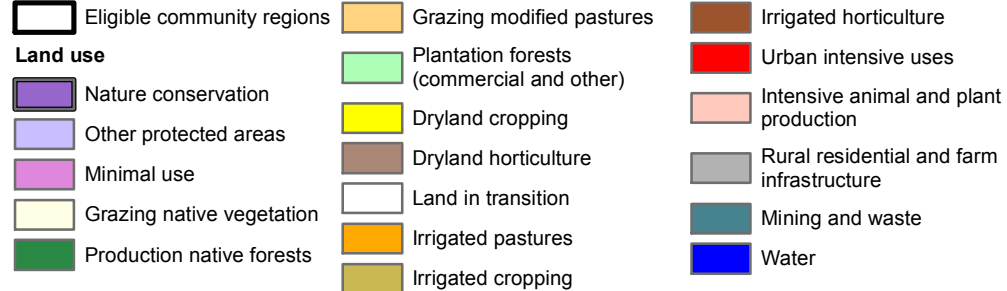
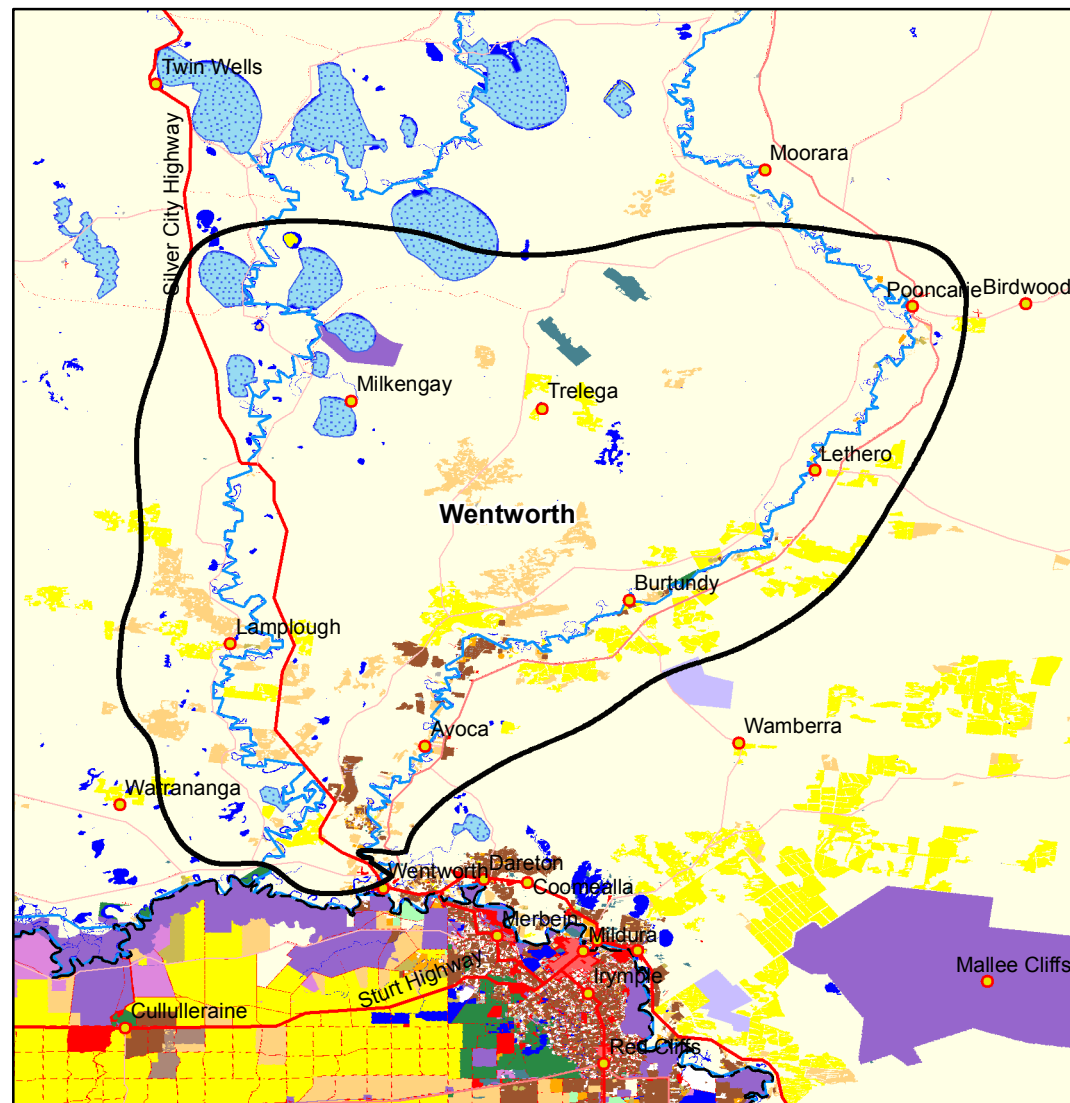
Wee Waa Map

Communities eligible for funding under the MDB Economic Development Program (Round 2)



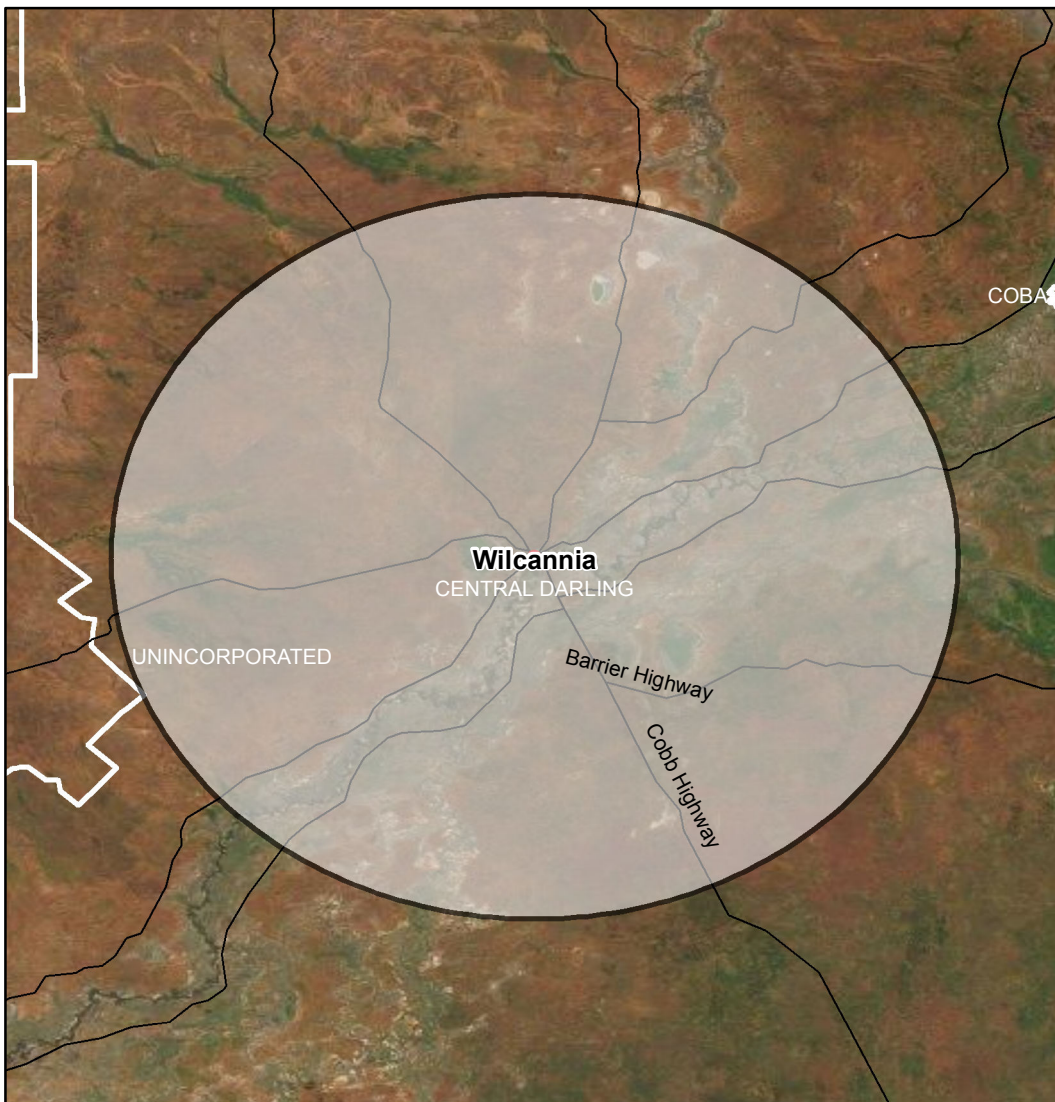
Data sources
ABARES 2019, Catchment Scale Land Use of Australia - Update December 2018,
PSMA 2018, Local Government Areas
MDBA 2019, Community regions,

Map produced by ABARES, Department of Agriculture, November 2019.



Wentworth Map

Communities eligible for funding under the MDB Economic Development Program (Round 2)

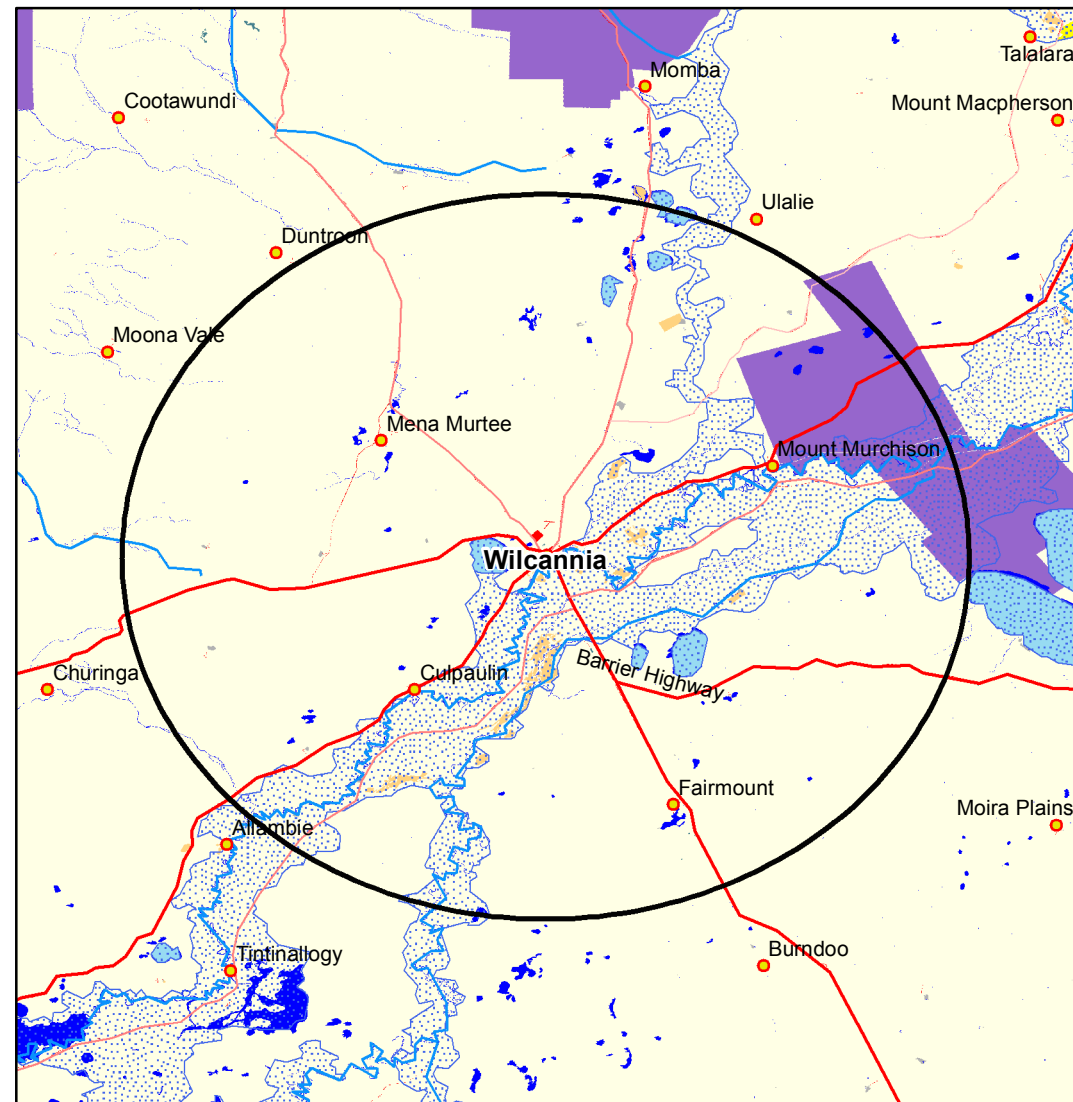


- Eligible community regions
- Towns
- Local Government Areas

0 5 10 20 km
 Datum GDA 94,
 Geographic Coordinate system

Data sources
 ABARES 2019, Catchment Scale Land Use of Australia - Update December 2018,
 PSMA 2018, Local Government Areas
 MDBA 2019, Community regions,

Map produced by ABARES, Department of Agriculture, November 2019.



- Eligible community regions
- Land use**
- Grazing native vegetation
- Grazing modified pastures
- Nature conservation
- Minimal use
- Urban intensive uses
- Rural residential and farm infrastructure
- Mining and waste
- Water

Wilcannia Map

Communities eligible for funding under the MDB Economic Development Program (Round 2)